

SECTION 1

SLURRY & WASTE HANDLING COMPONENTS

Battioni Vacuum Pumps	4
MEC5000/6500/8000	6
MEC9000/11000/13500	8
Star Pumps Breakdown	9
Garda Pump Breakdown	11
Pump Lubrications	14
Manual & Hydraulic Changeover	16
Pump Vanes & Vanes Kits	17
Hydraulic Rain Gun	18
MZ Gate Valves	19
RIV Gate Valves	27
Galvanised Fittings	29
Italian Couplings	29
Perrot Couplings	39
Bauer Couplings	41

Abbey Manufactured Couplings	44
Activator Rams, Springs & Components	45
Slurry Tank Kits	46
Vaccum Tank Rear Doors & Traps	47
Front Level Indicator & Inspection Glasses	50
Autofiller Rubber Coupling	51
Side Spreader Chains & Heads	52
Abbey Side Spreader Parts	54
Hertell Water & Effluent Pump	56
Suction Hoses	57
Layflat Hose	59
Wire Reinforced Trap Hose	61
Braided Hose/Wash Hose Kit	62
Mikalor Hose Clips	63
Mikalor Heavy Duty Hose Clips	63





**Battioni®
Pagani**

Setting the pace since 1953

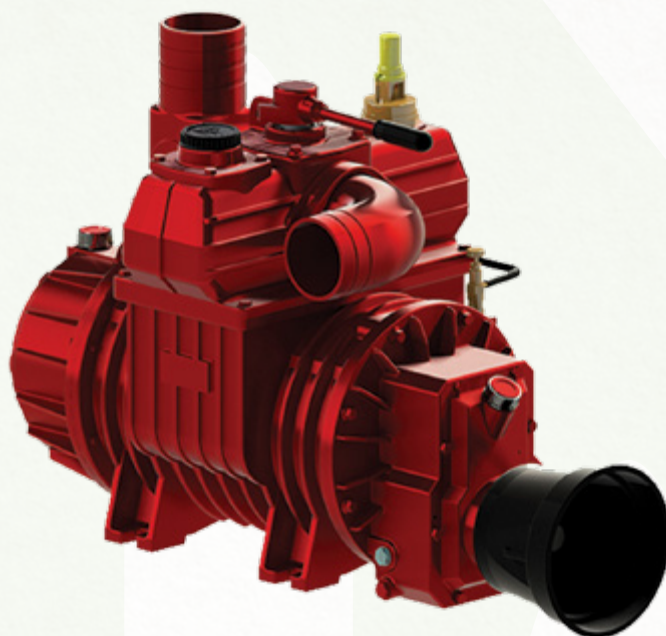
SECTION 1

SLURRY & WASTE HANDLING COMPONENTS

BATTIONI VACUUM PUMPS

Abbey's pump range comes from one of the world leaders in Vacuum Pump manufacturing, **Battioni Pagani®**. Their application engineering team works together every day with OEMs, dealers and end users in determining the best solution to the most specific, and demanding application.

The company wide product range provides for over 4,000 different models of rotary vanes vacuum pumps, with airflow from 1,000 l/min up to 5,5000 l/min, centrifugal pumps, lobe pumps, accessories and components being utilized in all agricultural and farming applications. These include handling and spraying animals liquid waste, emptying hose reels for irrigation and handling slurry for the biogas industry.



Star/60/72 Pump



MEC 1000/1600/2000/3000/4000



MEC 8000/9000/11000/13500

PART NO.	DESCRIPTION
MEC8000	Battioni MEC 8000 Pump Unit Complete
MEC9000	Battioni MEC 9000 Pump Unit Complete
MEC11000	Battioni MEC 11000 Pump Unit Complete
MEC13500	Battioni MEC 13500 Pump Unit Complete
MEC8000-H	MEC 8000 Hydraulic Drive Pump Complete with Hydraulic Motor
MEC9000-H	MEC 9000 Hydraulic Drive Pump Complete with Hydraulic Motor
MEC11000-H	MEC 11000 Hydraulic Drive Pump Complete with Hydraulic Motor
MEC13500-H	MEC 13500 Hydraulic Drive Pump Complete with Hydraulic Motor
MEC11000/D	MEC 11000 Pump (Direct Drive)
HYD MOTOR KM 30.51	Hydraulic Motor KM 30.51 Unidirecti
HYD MOTOR KM 40.87	Hydraulic Motor KM 40.87 Unidirecti
HYD MOTOR KM40.73 RO	Hydraulic Motor KM 40.73 RO
STAR/60MVLF	Star 60 Pump
STAR/72MVLF	Star 72 Pump



For prices see **Page 1**
in **Q-PARTS Price List**


**Battioni®
Pagani**
Setting the pace since 1953

PART NO.	DESCRIPTION
GRD8000 PUMP-C	Garda 8000 Pump Complete
GRDPUMP-O	MEC 8000 Pump For Garda Centivac
GRD9000PUMP-O	9000 Garda Pump Only
GRD9000-PUMPSET	9000 Garda Pump Complete with Raingun
GRD11000-PUMPNG	11000 Garda Pump Complete
GRD11000-PUMPSET	11000 Garda Pump Complete with Raingun
GRD13500-PUMPNG	13500 Garda Pump Complete
GRD13500-PUMPSET	13500 Garda Pump Complete with Raingun
EVO/9000 BALLAST/DODA AFI27	Garda EVO/9000 Ballast/Doda AFI27
EVO/9000 BALLAST/DODA AFI35	Garda EVO/9000 Ballast/Doda AFI35
EVO/9000 MEC/DODA AFL35	Garda EVO/9000 Mec/Doda AFL35
EVO/11000 BALLAST/DODA AFI27	Garda EVO/11000 Ballast/Doda AFI27
EVO/11000 BALLAST/DODA AFI35	Garda EVO/11000 Ballast/Doda AFI35
EVO/11000 BALLAST/TURBO PUMP	Garda EVO/11000 Ballast/Turbo Pump
EVO/13500 BALLAST/DODA AFI27	Garda EVO/13500 Ballast/Doda AFI27
EVO/13500 BALLAST/DODA AFI35	Garda EVO/13500 Ballast/Doda AFI35
EVO/13500 BALLAST/TURBO	Garda EVO/13500 Ballast/Turbo
EVO/16000 BALLAST/DODA AFI35	Garda EVO/16000 Ballast/Doda AFI35



Garda 8000 Pump

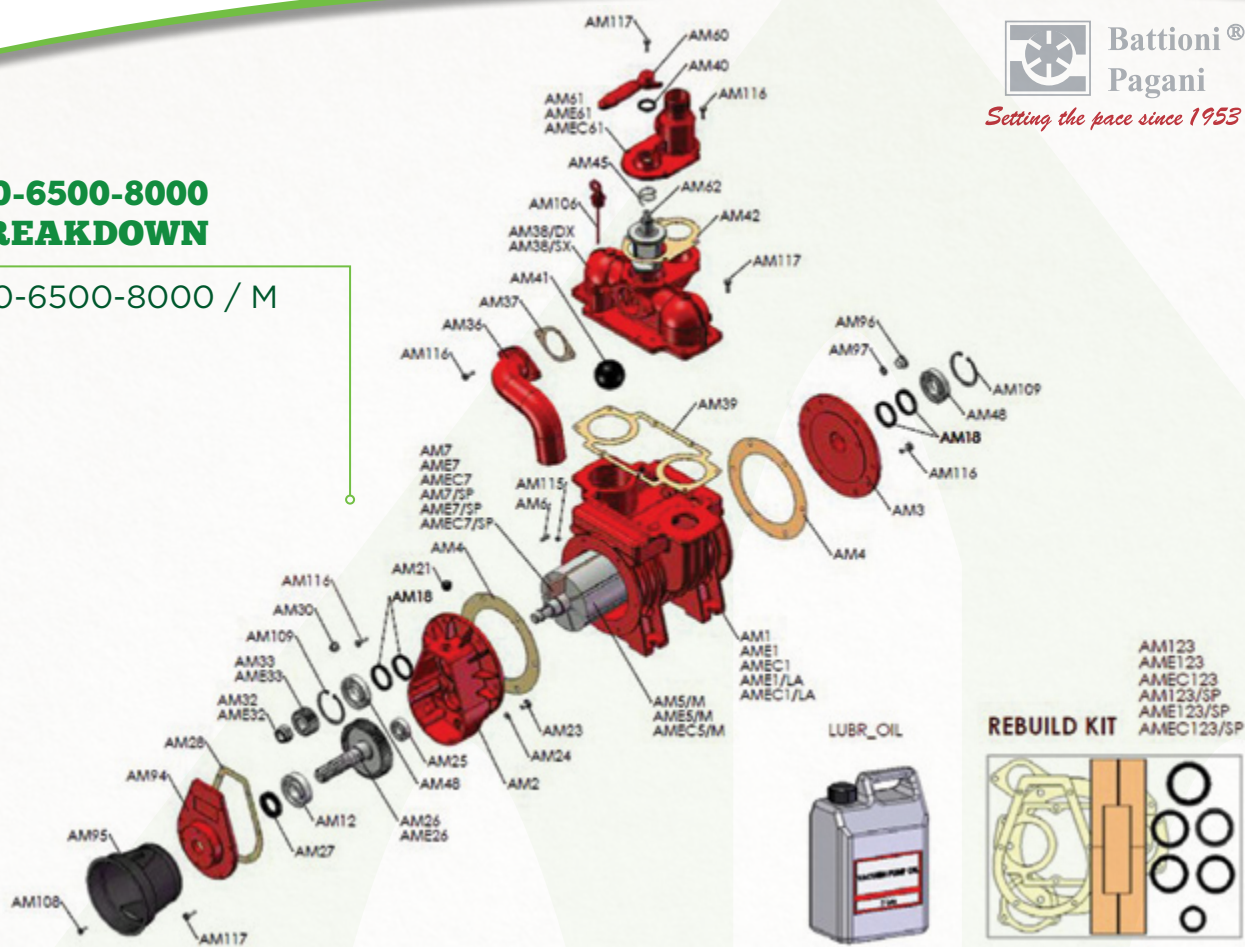


For prices see **Page 1**
in **Q-PARTS Price List**


**Battioni®
Pagani**
Setting the pace since 1953

MEC5000-6500-8000 PUMP BREAKDOWN

MEC 5000-6500-8000 / M



PART NO.

DESCRIPTION

MECAM1	MEC 5000 Pump Rotor Housing
MECAM2	MEC Pump Gearbox Housing
MECAM3	MEC Pump Rear Flange
MECAM3/P	MEC Pump Front Flange
MECAM4	MEC Pump Flange Gasket
MECAM5/H	MEC 5000 Pump Rotor (Hydraulic)
MECAM5/M	MEC 5000 Pump Rotor
MECAM5/D	MEC 8000 Direct Drive Rotor
MECAM6	MEC Pump Drive Rotor Key
MECAM8	MEC Pump Hose Nipple
MECAM9	MEC Pump Allen Screw (Handle)
MECAM10	MEC Pump Oil Dipstick
MECAM12	MEC Pump Bearing (6307)
MECAM13	MEC Pump Rear Cover Gasket
MECAM14	MEC Pump Rear Support Cover
MECAM15	MEC Pump Rearcover Grease Nipple
MECAM18	MEC Pump Oil Seal 48 x 62 x 8mm
MECAM21	MEC Pump 3/8" Plastic Oil Plug
MECAM24	MEC Aluminium Washer 10 x 16mm

PART NO.

DESCRIPTION

MECAM25	MEC Pump Bearing (6304)
MECAM26	MEC Pump Gear Z-55 (5000)
MECAM28	MEC Pump Front Cover Gasket
MECAM29	MEC Pump Front Gear Box Cover (Old)
MECAM30	MEC Pump Oil Inspection Plug
MECAM31	MEC Pump Hose Coupler
MECAM32	MEC Pump 24mm x 2mm Locknut
MECAM33	MEC Pump Gear Z-21 (5000)
MECAM36	MEC Pump Exhaust Pipe
MECAM37	MEC Pump Exhaust Gasket
MECAM38	MEC Pump Head Unit
MECAM39	MEC Pump Head Gasket
MECAM40	MEC Pump Oilseal 30mm x 40mm x 7mm
MECAM41	MEC Pump Trap Ball
MECAM42	MEC Pump Hose Coupler Gasket
MECAM43	MEC Pump PTO Guard (Old)
MECAM45	MEC Pump Compression Spring
MECAM46	MEC Pump Rubber Hose 210mm
MECAM47	MEC Pump Valve


For prices see **Pages 2-3**
in **Q-PARTS Price List**


**Battioni®
Pagani**
Setting the pace since 1953

PART NO.	DESCRIPTION
MECAM48	MEC Pump Bearing (6208)
MECAM49	Pump Front Cover Grease Nipple
MECAM52	MEC Pump Rotor Shaft Key
MECAM53	MEC Pump Front Shaft Spacer
MECAM54	MEC Pump Small Front Cover
MECAM55	Pump Rotor Shaft Bearing (6207)
MECAM57	MEC Pump Spacer Ring 80mm x 70mm x 5mm
MECAM58	MEC Pump Spacer Ring 50mm x 40mm x 5mm
MECAM60	MEC Pump Selector Handle
MECAM91	MEC Pump Selector Handle (New)
MECAM61	MEC Pump Hose Coupler 60 (New)
MECAM62	MEC Pump Selector Valve
MECAM77	Direct Drive Pump Coupling
MECAM80	MEC Pump Oil Seal 55mm x 68mm x 8mm
MECAM81	MEC Hydraulic Motor Support
MECAM87	Direct Drive Pump Coupling
MECAM91	MEC Hydraulic Activating Handle
MECAM94	MEC Pump Front Gear Box Cover

PART NO.	DESCRIPTION
MECAM95	MEC Pump PTO Guard (21902)
MECAM96	MEC Pump Iron Plug
MECAM97	MEC Aluminium Washer 16 x 20mm
MECAM106	Oil Dipstick (New)
MECAME1	MEC 8000 Pump Rotor Housing
MECAM5/H	MEC 8000 Pump Rotor (Hyd)
MECAM5/M	MEC 8000 Pump - Drive Rotor
MECAME26	MEC Pump Gear Z53 (6500,8000)
MECAM31	MEC Pump Large Hose Coupler
MECAME32	MEC Pump - 27mm x 2mm Locknut
MECAME33	MEC Pump Gear Z23 (6500 & 8000)
MECAME61	MEC Pump Hose Coupler 80(New)
MECAM82	MEC Hyd Rotor Trans Coupling
MECAMEC1	MEC 6500 Pump Rotor Housing
MECAMEC5/M	MEC 6500 Pump - Drive Rotor
MECAME31	MEC Pump 80mm Hose Coupler
MECAME32	MEC Pump - Unit
MECAME61	Mec Pump Hose Coupler 76
MECHOSE	MEC Pump - Oil Pump Hose
MECPUMP	MEC Pump - Oil Pump Complete

More than 500,000 **MEC Pumps** have been put in operation to empty cesspits and transport slurry for agricultural and industrial applications.

The reliability and strength of the MEC Pump is the result of rigorous engineering, continuous design and manufacturing improvements which have been accomplished over 40 years of deployments.

STANDARD FEATURES:

- Forced lubrication, 4-ways valve and check valve
- Thread for overpressure valve: G 1 1/2
- Available hoses connections: Ø 60mm / Ø 76mm (3") / Ø 80mm



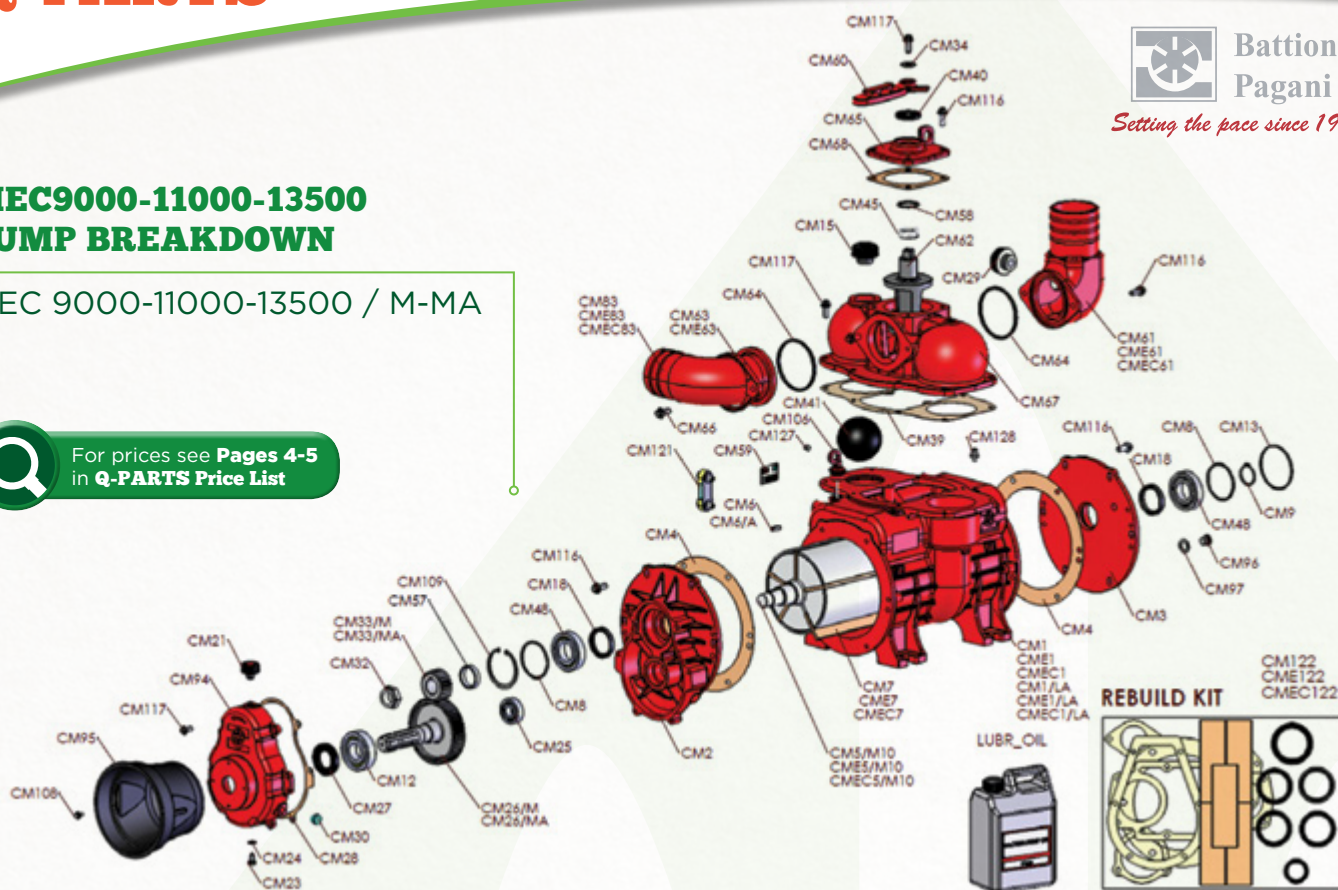
For prices see **Page 3**
in **Q-PARTS Price List**

MEC9000-11000-13500 PUMP BREAKDOWN

MEC 9000-11000-13500 / M-MA



For prices see **Pages 4-5**
in **Q-PARTS Price List**



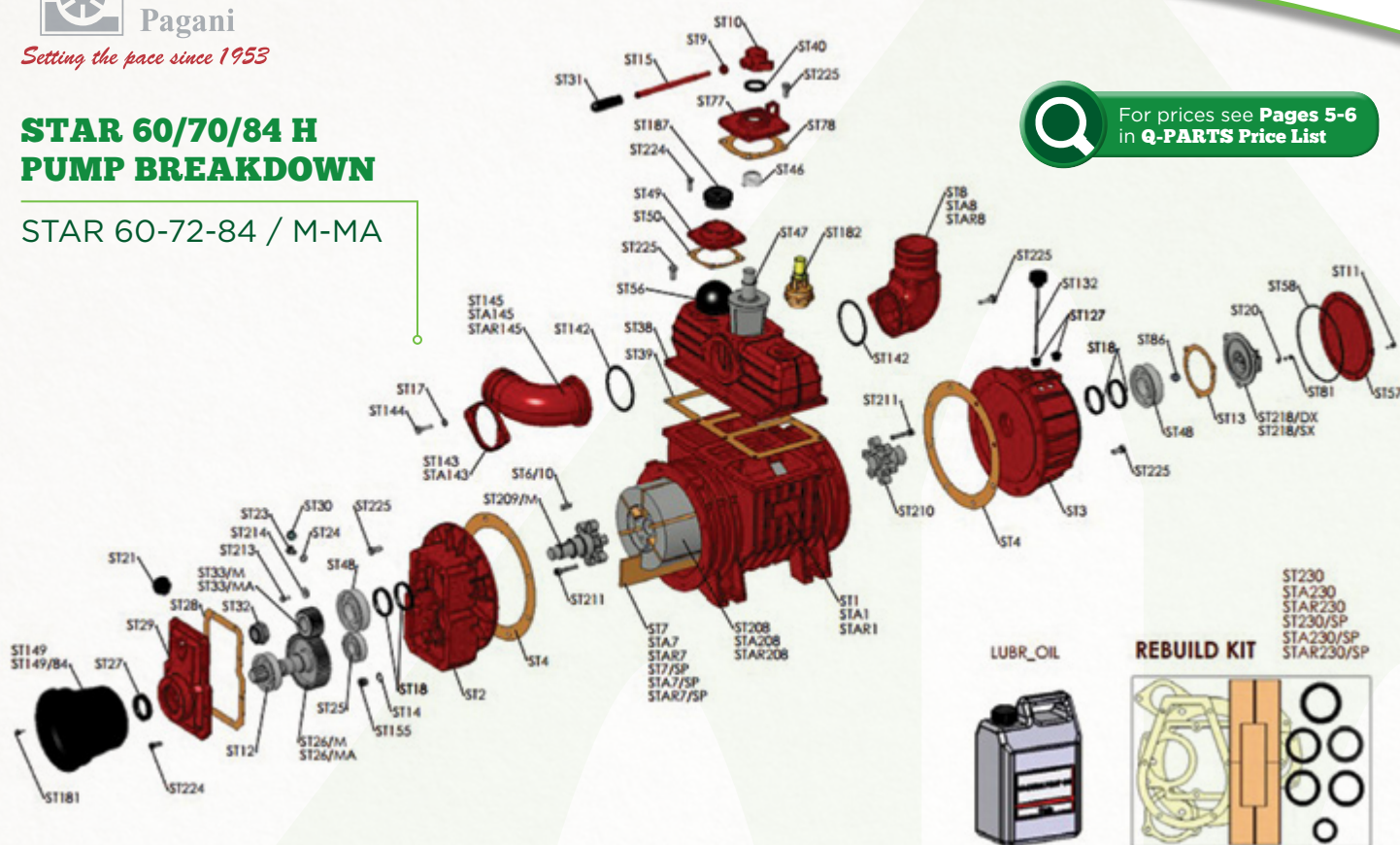
PART NO.	DESCRIPTION
MECCM1	MEC 9000 Pump Rotor Housing
MECCME1	MEC 11000 Pump Rotor Housing
MECCMEC1	MEC 13500 Pump Rotor Housing
MECCM2	MEC Pump Gearbox Housing
MECCM3	MEC Pump Rear Flange
MECCM4	MEC Pump Flange Gasket
MECCM5/M	MEC 9000 Pump Rotor
MECCME5/M	MEC 11000 Pump Motor
MECCMEC5/M	MEC 13500 Pump Rotor
MECCM6	MEC Pump Drive Rotor Key
MECCM8	MEC Pump O-Ring 80mm Dia
MECCM9	MEC Pump Seeger Ring 40mm Dia
MECCM15	MEC Pump Plug
MECCM18	MEC Pump Oil Seal (48mm x 62mm x 10mm)
MECCM21	MEC Pump Oil Plug
MECCAME26	MEC Pump Gear Z53
MECCM27	MEC Pump Oil Seal 35 x 62 x 10mm
MECCM28	MEC Pump Front Cover Gasket
MECCM30	MEC Pump Oil Level Plug
MECCM32	MEC Pump M27 Lock Nut
MECCM33/M8	MEC Pump Gear Z23
MECCM34	MEC Pump Washer 8mm x 23mm x 4mm

PART NO.	DESCRIPTION
MECCM39	MEC Pump Manifold Gasket
MECCM41	MEC Pump Trap Ball 90mm Dia
MECCM45	MEC Pump Spring
MECCM53	Shaft Spacer
MECCM60	MEC Pump Selector Handle
MECCME61	MEC Pump Hose Coupler 80mm
MECCM62	MEC Pump Selector Valve
MECCM63	Support Flange 80mm
MECCM64	MEC Pump Seal Ring 189mm
MECCM65	MEC Pump Cover
MECCM67	MEC Pump Manifold
MECCM68	MEC Pump Manifold Cover Gasket
MECCME83	MEC Exhaust 80mm
MECCM94	Front Gearbox Housing for MEC9000
MECCM96	MEC Pump Iron Plug
MECCM97	MEC Pump Alum Washer 16mm x 20mm x 1.5mm
MECCM117	Screw (M8 x 25mm)
MECCM121	Oil Level Indicator
MECCME61	MEC Pump Hose Coupler 80mm
MECCME83	MEC Exhaust 80mm
MECCM106	Battioni MEC Pump Oil Level Rod


**Battioni®
Pagani**
Setting the pace since 1953

STAR 60/70/84 H PUMP BREAKDOWN

STAR 60-72-84 / M-MA


 For prices see **Pages 5-6**
in **Q-PARTS Price List**

PART NO.

DESCRIPTION

ST1	Star 60 Housing
STA1	Housing - Star 72
ST2	Gearbox - Star
ST3	Back Tank - Star
ST4	Body Gasket - Star
ST6/10	Key - 10mm x 8mm x 30mm
ST7	Standard Blade - Star 60 350mm x 70mm x 7.5mm
STA7	Standard Blade - Star 72 400mm x 70mm x 7.5mm
ST7/SP	Long Life Blade - Star 60 350mm x 70mm x 7.5mm
STA7/SP	Long Life Blade - Star 72 400mm x 70mm x 7.5mm
ST9	Nut - M 12
ST10	Reverse Selector - Star-Wpt
ST11	Screw - M 6 x 16 TCEI
ST12	Ball Bearing - 6308
ST13	Back Cover Gasket - Star
ST14	Aluminium Washer - D 16mm x 20mm x 1.5mm

PART NO.

DESCRIPTION

ST15	Handle Pin - Star-Wpt
ST17	Smooth Washer - D 10
ST18	Oil Seal - 55mm x 68mm x 8mm
ST20	Smooth Washer - D 6
ST21	Oil Plug - D 1/2" Gas
ST23	Screw - M 10 x 16 TE
ST24	Aluminium Washer - D 16mm x 20mm x 1.5mm
ST25	Ball Bearing - 6306
ST26/M	Gear with Shaft - Z52-M2 5 Star-Wpt/M
ST26/MA	Gear with Shaft - Z44-M2 5 Star-Wpt/Ma
ST27	Oil Seal - 40mm x 62mm x 10mm
ST28	Gearbox Cover Gasket - Star
ST29	Gearbox Cover - Star-Wpt/M - CE
ST30	Oil Level Plug - D 3/8" Gas
ST31	Handle Knob - Wpt-Star
ST32	Self-Locking Nut - M 30mm x 2mm x 19mm
ST33/M	Pinion - Z26-M2 5 Star-Wpt/M 10mm
ST33/MA	Pinion - Z34-M2 5 Star-Wpt/Ma 10mm
ST38	Manifold - Star UI



PART NO.	DESCRIPTION
BPST39	Manifold Gasket - Star
ST40	Oil Seal - 35mm x 50mm x 7mm TC
BPST46	Spring - Star-Wpt
BPST47	Reversing Gear - Star- Wpt
ST48	Ball Bearing - 6309
ST49	Valve Cover - Star
ST50	Valve Cover Gasket - Star
ST56	Rubber Ball - D 90
ST57	Oil Tank Cover - Star
ST58	Seal Ring - Or 4700 Star
BPST77	Manifold Cover - MEC 9 13500-Star-Wpt/UI
BPST78	Manifold Cover Gask - MEC 9 13500-Star-Wpt
ST81	Galvanized Screw - M 6 x 10mm TEF
ST86	Connector Joint - L.F.
ST127	Closed Tube-Pass
ST132	Oil Charge Plug With Rod - D 1/2" Gas
ST142	Seal Ring - Or 189 Starul
ST143	Flange For Elbow - Star D80
STA143	Flange For Elbow - Star D100
ST144	Screw - M 10mm x 35mm TE
STA145	Revolving Elbow - MEC 9 13500-Stard 80

PART NO.	DESCRIPTION
STAR145	Revolving Elbow - Mec 9 13500-Stard 100
ST149	Shaft Guard - CE
ST149/84	Shaft Guard - Garda-Ledra CE
ST155	Plug - D 16mm x 1 5mm Din 908
ST181	Screw
ST182	Depression Valve - D 1 1/2" Gas
ST187	Black Plug - D 2" Gas
ST208	Continuous Casting Rotor - Star 60
STA208	Continuous Casting Rotor - Star 72
ST209/M	Front Pin - Star/M-K-G-Ma-Ka
ST210	Rear Pin - Star
ST211	Screw - M 10 x 50mm TCEI 12.9 Uni5931
ST213	Screw - M 8 x 16mm TE
ST218/DX	Pump - LF Star CW
ST218/SX	Pump - LF Star CCW
ST124	Washer - 8mm x 23 x 4mm - Din 6340
ST224	Screw - M 8mm x 25mm TEF - FL/ZIGR 8.8
ST225	Screw - M 10mm x 25mm TEF - FL/ZIGR 8.8
ST230	Rebuild Kit - Star 60 Standard
STA230	Rebuild Kit - Star 72 Standard

The **STAR** series provides the highest air flow within the air-cooled pumps range. The rotor has fixed steel pins to grant easy maintenance and provide significant reduction of maintenance costs.

Through wide intake and delivery chambers the STAR pump provides the maximum vacuum efficiency. STAR's design features and performances make this pump ideal for more demanding agricultural applications and for septic emptying by medium and decompression valve.

AVAILABLE MODELS:

STAR 60 / STAR 72 / STAR 84

AIRFLOW:

From 10.680 l/min to 14.420 l/min (640-865 m³/h - 377-510 cfm).



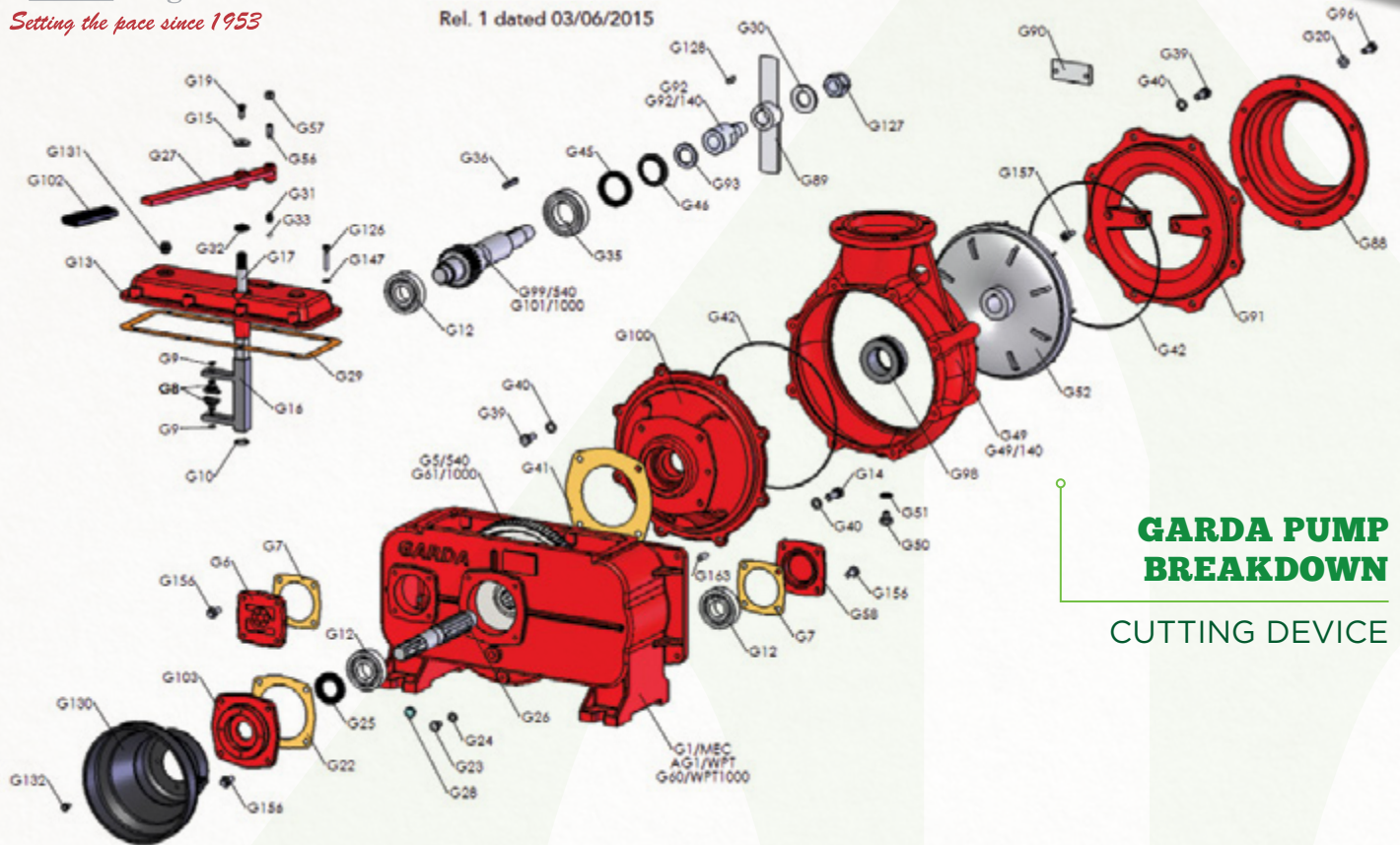
For prices see **Pages 6-7**
in **Q-PARTS Price List**



Battioni®
Pagani

Setting the pace since 1953

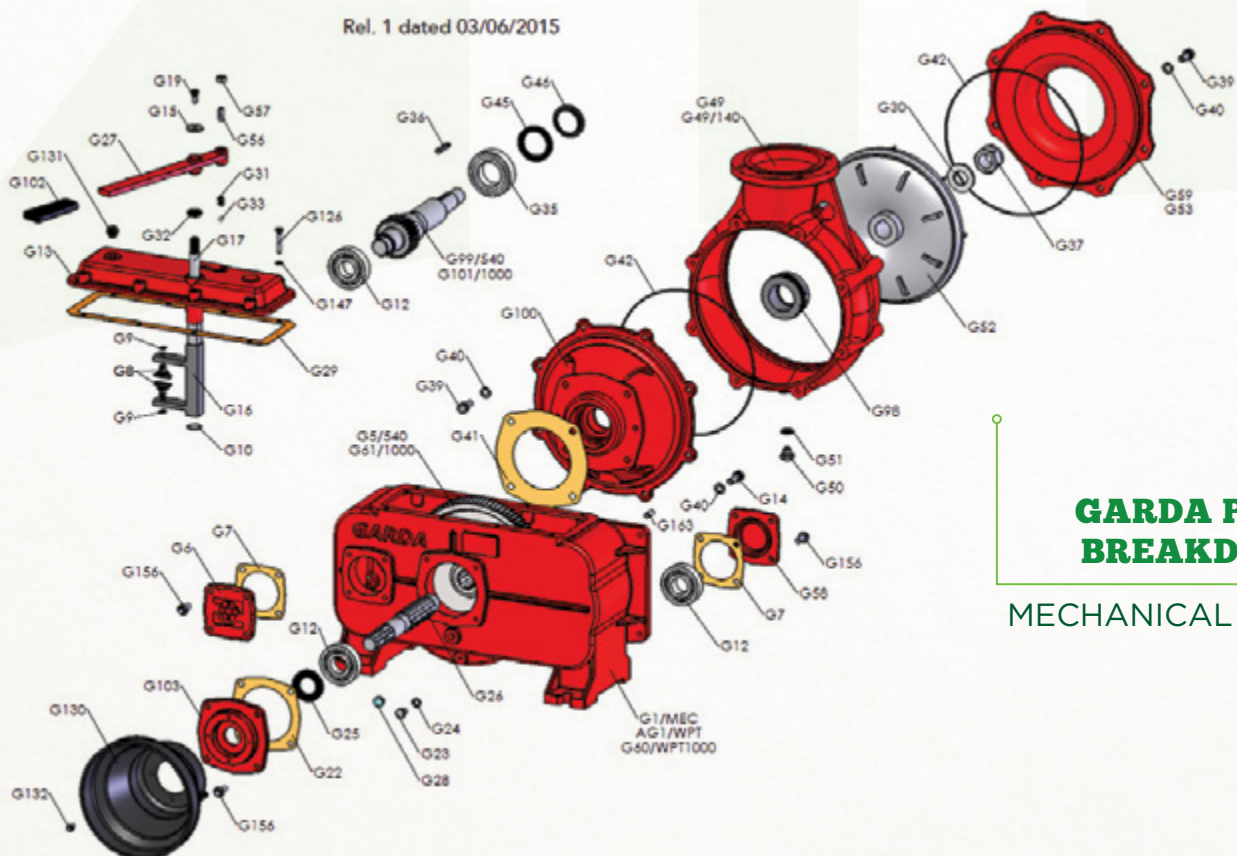
Rel. 1 dated 03/06/2015



GARDA PUMP BREAKDOWN

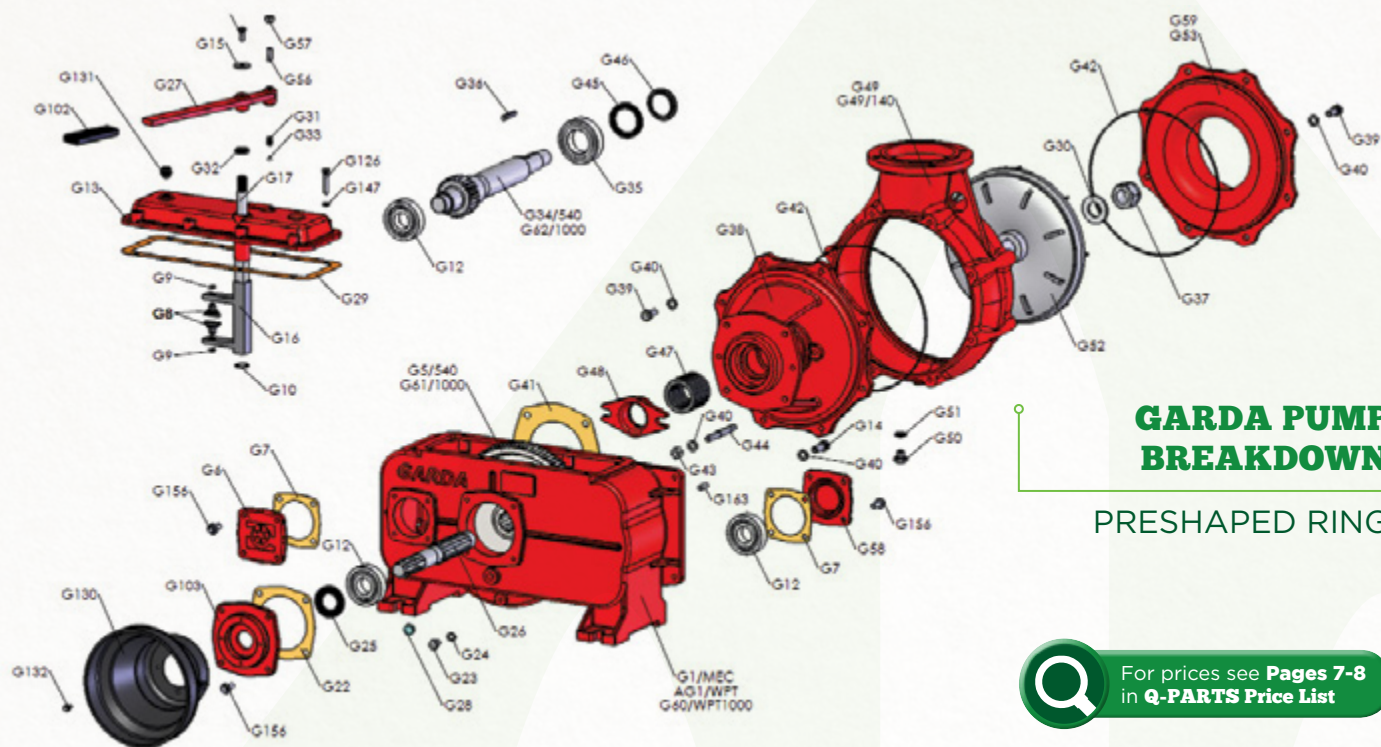
CUTTING DEVICE

Rel. 1 dated 03/06/2015



GARDA PUMP BREAKDOWN

MECHANICAL SEAL


**Battioni®
Pagani**
Setting the pace since 1953


GARDA PUMP BREAKDOWN

PRESHAPED RING



For prices see **Pages 7-8**
in **Q-PARTS Price List**

PART NO.	DESCRIPTION	PART NO.	DESCRIPTION
GRDG1	Pump Front Housing	GRDG30	Pump Allen Screw
GRDG2	Pump Front Shaft Cover	GRDG31	Pump Spring
GRDGR3	Pump Front Flange (Cover)	GRDG32	Pump Oil Seal - 19mm x 27mm x 6mm
GRDG4	Pump Front Flange Gasket	GRDG33	Pump Ball
GRDG5	Pump Large Gear Z-97 (M3)	GRDG34	Pump Impeller Drive Shaft
GRDG6	Pump Impeller Shaft Front Cover	GRDG35	Pump Shaft Bearing (4210-A)
GRDG7	Pump Rear Flange Gasket	GRDG36	Pump Impeller Shaft Key 8mm x 7mm x 50mm
GRDG8	Pump Front Flange Grease Nipple	GRDG37	M32 x 2 Lock Nut
GRDG9	Pump Circlip	GRDG38	Pump Impeller Housing - Threaded Bar
GRDG12	Pump Drive Shaft Bearing (6307)	GRDG41	Pump Impeller Housing Gasket
GRDG13	Pump Top Housing Cover	GRDG42	Pump 320mm x 3.53mm O-Ring
GRDG15	Pump Washer - M8	GRDG43	Pump Impeller FR Housing Nut M12
GRDG16	Pump Handle - Activator	GRDG44	Pump Impeller Housing - Threaded Bar
GRDG17	Pump Handle Extension	GRDG45	Pump Oil Seal 50mm x 70mm x 10mm
GRDG18	Pump Screw - M8 x 35mm	GRDG46	Pump Oil Seal (H-187)
GRDG19	Pump Screw - M8 x 20mm	GRDG47	Pump Gland Packing
GRDG21	Pump Top Housing Cover Stud	GRDG48	Pump Clamping Bracket
GRDG22	Pump Housing Shaft Cover Gasket	GRDG49	Pump Impeller Housing
GRDG25	Pump Drive Oil	GRDG50	Drain Stopper Gas 1/4"
GRDG26	Pump Main Drive Shaft	GRDG52	Pump Impeller
GRDG27	Pump Activating Handle	GRDG53	Pump Rear Impeller Housing
GRDG28	Pump Sight Glass		
GRDG29	Pump Housing Top Cover Gasket		



Battioni®
Pagani

Setting the pace since 1953

PART NO.	DESCRIPTION
GRDGS4	Pumpmotor Housing Cover Screw
GRDGR55	Pump Housing 39 Tooth Gear (M28)
GRDAG55	Pump Housing 45 Tooth Gear
GRDGS55-50	Pump Housing 50 Tooth Gear
GRDGS6	Pump Stop Dowel
GRDGS8	Pump Back Cover
GRDGS9	Pump Housing
GRDG88	Plate
GRDG89	Blade

PART NO.	DESCRIPTION
GRDG90	Blade
GRDG92	Shaft Extension
GRDG93	Shim Washer
GRDG98	Seal For Garda Pump
GRDG99	Pump No.99 Shaft For Garda Pump
GRDG100	Pump Impeller Front Housing
GRDG103	Gearbox Front Cover
GRD6106	Pump PTO Shaft Guard (219000141_)
GRDG143	Shaft Only

The **GARDA** group is composed of an exhauster/compressor used to fill agricultural tanks and of a centrifuge pump used for sewage spreading.

MEC 8000 HYDRAULIC BREAKDOWN

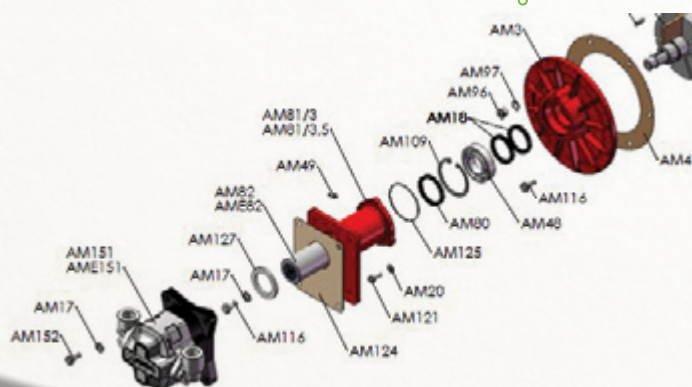
PART NO.	DESCRIPTION
MECAM3	Front Blade
MECAM4	Gasket
MECAM18	Seal (48mm x 62mm x 8mm)
MECAM48	Pump Bearing (BRN6208)
MECAM49	Grease Nibble
MECAM96	Plug
MECAM97	Washer

MEC 9000/11000/13500 HYDRAULIC BREAKDOWN

PART NO.	DESCRIPTION
MECCM3	Front Blade
MECCM4	Gasket
MECCM8	O-Ring
MECCM18	Seal (48mm x 62mm x 10mm)
MECCM49	Pump Lubricator
MECCM96	Plug
MECCM97	Aluminium Washer (16mm x 20mm x 1.5mm)
MECCM116	Screw (M10 x 25)

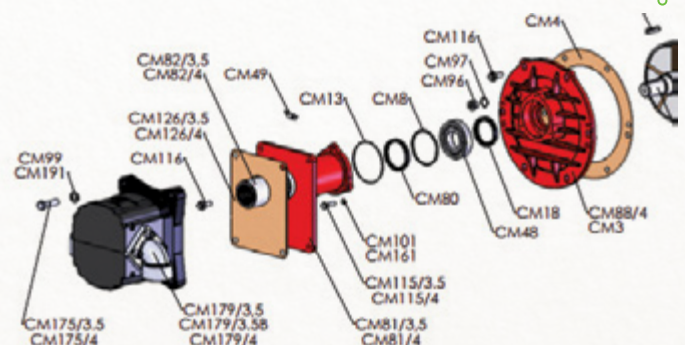
HYDRAULIC BREAKDOWN

MEC 8000 HYDRAULIC



HYDRAULIC BREAKDOWN

MEC 9000/11000/13500 HYDRAULIC

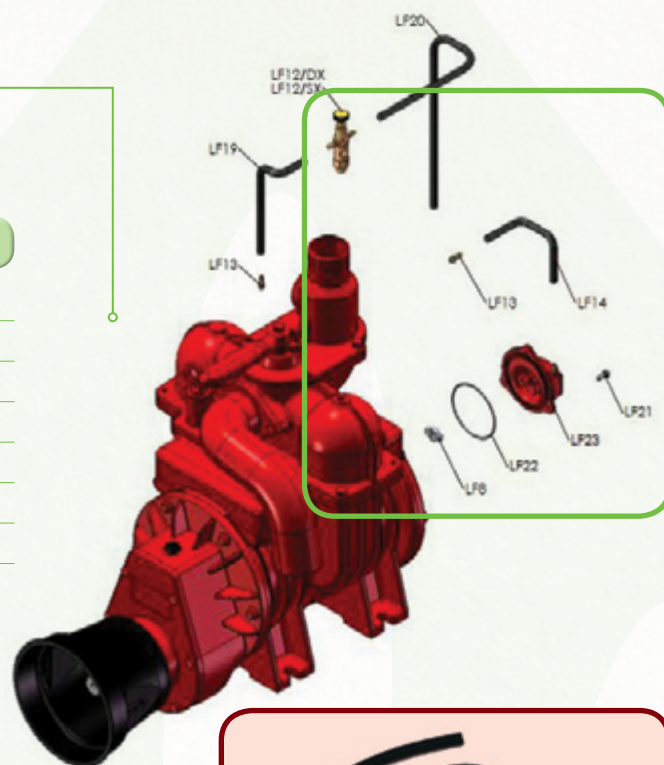


For prices see **Pages 8-9**
in **Q-PARTS Price List**

PUMP LUBRICATION

MEC 6500/8000 FORCED LUBRICATION

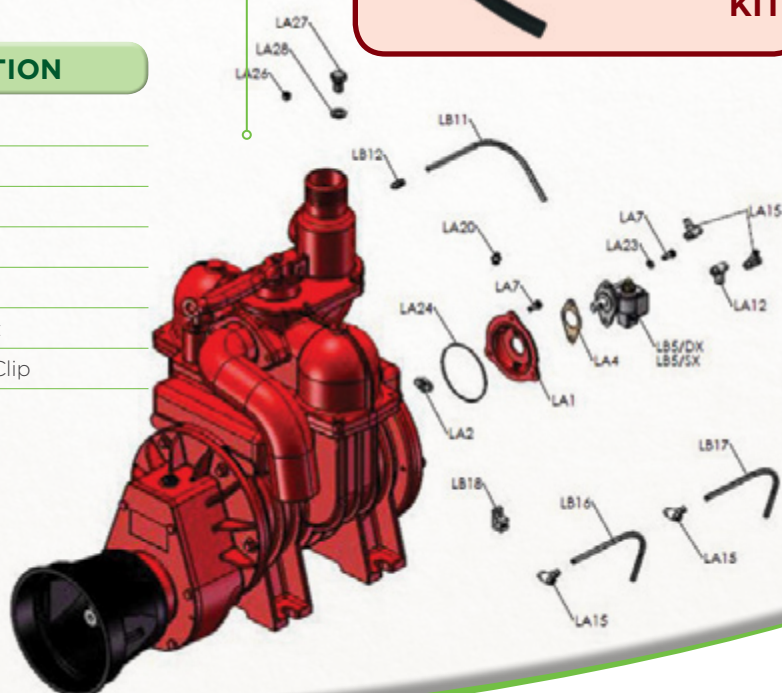
PART NO.	BATTIONI REF.	DESCRIPTION
MECPUMP	LF23	Pump Complete
BPSS86	LF8	Oil Pump Drive Clip
MECHOSE	LF14/LF19/LF20	Mechose
MECHOSE2		Plastic Oil Hose 2mm
MECHOSE4		Plastic Oil Hose 4mm
MECLF12/D	LF12/DX & LF12/SX	Pump Double Oiler
MECLF13	LF13	Oiler Connection Cupler



PUMP LUBRICATION

MEC 6500/8000 AUTOMATIC LUBRICATION

PART NO.	BATTIONI REF.	DESCRIPTION
BPSS79/D	LB5/DX & LB5/SX	Pump
BPS80	LA12	Connectors
BPSAS87	LA1	Plate
MECLA15	LA15	Connectors
MECHOSE	LB16/LB17	Hose
MECLB18	LB18	Hose Bracket
BPSS86	LA2	Pump Drive Clip





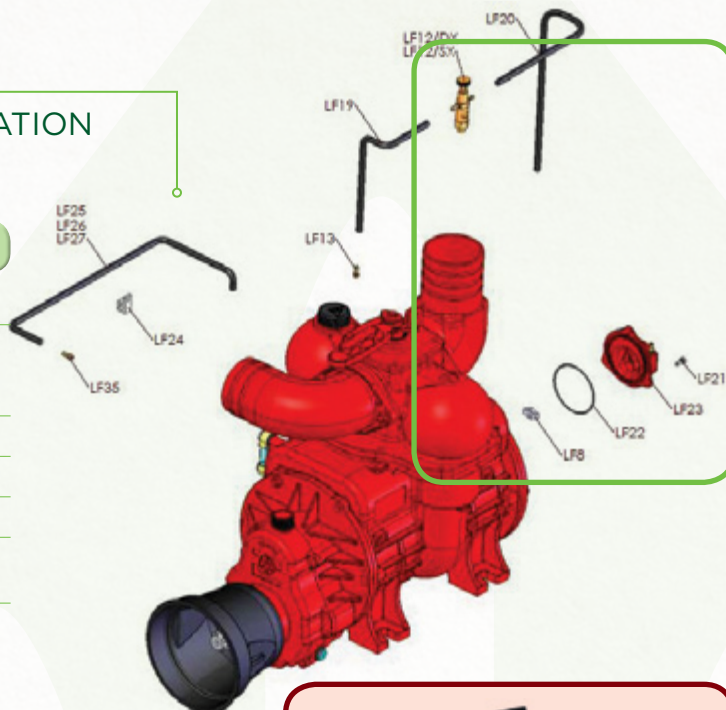
**Battioni®
Pagani**

Setting the pace since 1953

PUMP LUBRICATION

MEC 9000/1100/13500 FORCED LUBRICATION

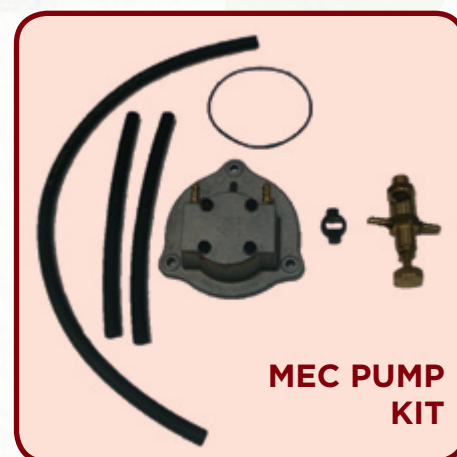
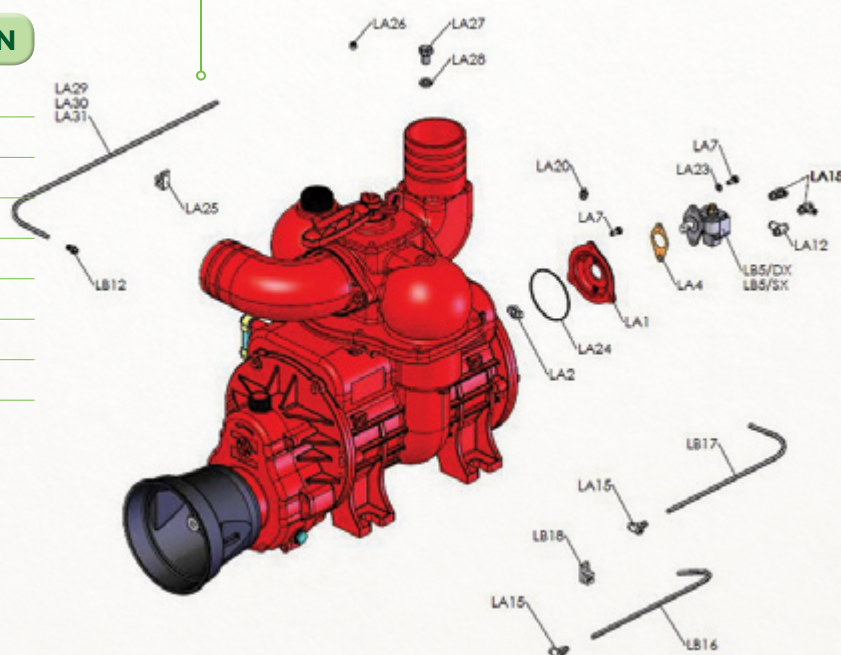
PART NO.	BATTIONI REF.	DESCRIPTION
MECPUMP	LF23	Pump Complete
BPSAS120C		Pump Complete for MEC10000 & MEC12000
BPSS86	LF8	Oil Pump Drive Clip
MECHOSE	LF14/LF19/LF20	Mechose
MECLF12/D	LF12/DX & LF12/SX	Pump Double Oiler
MECLF13	LF13	Oiler Connection Cupler



PUMP LUBRICATION

MEC 9000/1100/13500 AUTOMATIC LUBRICATION

PART NO.	BATTIONI REF.	DESCRIPTION
BPSS79/D	LB5/DX & LB5/SX	Pump
BPS80	LA12	Connectors
BPSAS87	LA1	Plate
MECLA15	LA15	Connectors
MECHOSE	LB16/LB17	Hose
MECLB18	LB18	Hose Bracket
BPSS86	LA2	Pump Drive Clip
MECLB12	LB12	Connector



For prices see **Pages 9-10**
in **Q-PARTS Price List**

CHANGEOVER HANDLES FOR BATTIONI PUMPS

CHANGEOVER HANDLE FOR BATTIONI PUMPS

MANUAL CHANGEOVER HANDLE

PART NO.	DESCRIPTION
ABY9180	Manual Changeover Handle Kit



CHANGEOVER HANDLE FOR BATTIONI PUMPS

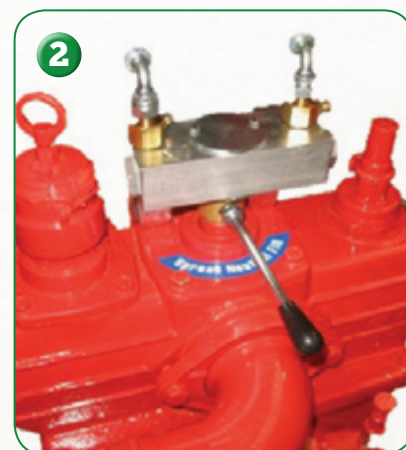
HYDRAULIC CHANGEOVER HANDLE 1

PART NO.	DESCRIPTION	MODEL
ABY4899	Hydraulic Changeover Handle Kit	MEC8000
MEC8000	Hydraulic Cylinder	MEC8000
ABY9160-CL	Hydraulic Changeover Handle Kit	MEC9000/11000/13500
ABY9577	Hydraulic Cylinder	MEC9000/11000/13500



HYDRAULIC CHANGEOVER HANDLE 2

PART NO.	DESCRIPTION	MODEL
ABY9140	Hydraulic Changeover	MEC8000
ABY9140-H	Actuator Handle Only	MEC8000
ABY9140-NH	Actuator Handle Only (NT)	MEC8000
MECB2/B3	MEC Pump Nipples for Joint 80	MEC8000
ABY9160	Hydraulic Changeover	BPSE1000/12000
ABY9160-H	Actuator Handle Only	BPSE1000/12000
ABY9160-4	Actuator Gear Only	BPSE1000/12000




**Battioni®
Pagani**
Setting the pace since 1953

PUMP VANES

Rebuild kit for rotary blades vacuum pump which is made of original **Battioni Pagani®** blades, gaskets, oilseals in one blister only.

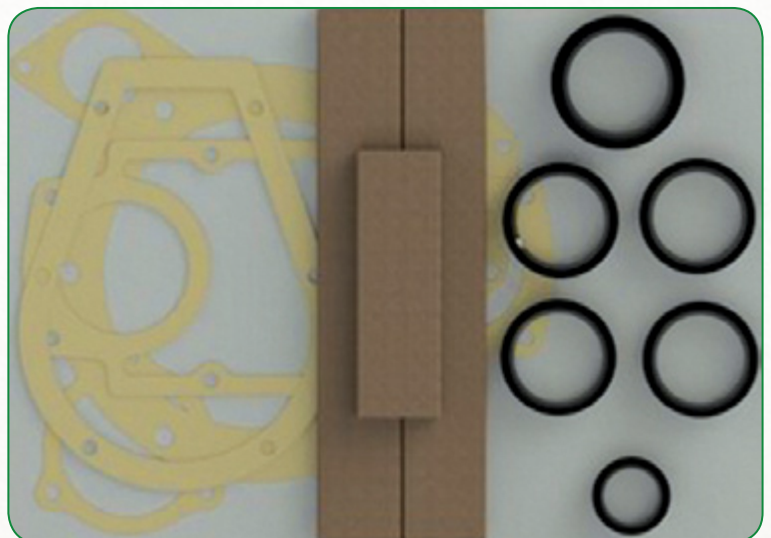


PART NO.	DESCRIPTION	DIMENSIONS
BATPS1044	Battioni AS7 Vane-SE10000 Pump (4 Vane)	350mm x 70mm x 9.5mm
BATPS1066	Battioni AS7 Vane-SE10000 Pump (6 Vane)	350mm x 70mm x 7.5mm
BATPS1244	Battioni ASE7 Vane-SE12000 Pump (4 Vane)	400mm x 70mm x 9.5mm
BATPS1266	Battioni ASE7 Vane-SE12000 Pump (6 Vane)	400mm x 70mm x 7.5mm
BATPS6566	Battioni S7 Vane - SE6500 Pump (6 Vane)	280mm x 60mm x 7.5mm
BATPS8066	Battioni SE7 Vane -SE8000 Pump (6 Vane)	330mm x 60mm x 7.6mm
BATPS1088	Hertell LK + KD (10,000) 360mm x 64mm x 75mm Vane	469mm x 45mm x 6mm
BATPS1095	Hertell LK + KD (8,000) 300mm x 64mm x 75mm Vane	360mm x 64mm x 7.5mm
BATPS8095	Hertell Pump Seal 35mm x 45mm x 7mm (H1000 Pump)	300mm x 64mm x 7.5mm
MECAM7	Battioni MEC 5000 Pump Vanes (7 Vane)	300mm x 46.5mm x 6.3mm
MECAMEC7	Battioni MEC 6500 Pump Vanes (7 Vane)	370mm x 46.5mm x 6.3mm
MECAME7	Battioni MEC 8000 Pump Vanes (7 Vane)	450mm x 46.5mm x 6.3mm
MECCM7	Battioni MEC 9000 Pump Long Life Vane (7 Vane)	300mm x 60mm x 6.5mm
MECCME7	Battioni MEC 11000 Pump Long Life Vane (7 Vane)	370mm x 60mm x 6.5mm
MECCMEC7	Battioni MEC 135000 Pump Long Life Vane (7 Vane)	460mm x 60mm x 6.5mm
MECEM4300-AGRI160	Battioni Agri-60 Long Life Vane	350mm x 70mm x 4.7mm
MECEM4300-WPT480	Battioni Wpt-480 Long Life Vane	300mm x 73.5mm x 7.5mm

VANE KITS

Our **Vane Kits** includes all the vanes, seals and gaskets to undertake a complete service of Battioni Vacuum Pumps.

PART NO.	DESCRIPTION
MEC6010201008BP	MEC8000 Vane Kit
MEC6010201080	MEC9000 Vane Kit
MEC6010201081	MEC11000 Vane Kit
MEC6010201010	MEC12000 Vane Kit
MEC6010201082	MEC13500 Vane Kit



For prices see **Pages 10-11**
in **Q-PARTS Price List**


 For prices see **Pages 11-12**
 in **Q-PARTS Price List**

Battioni®
Pagani
Setting the pace since 1953

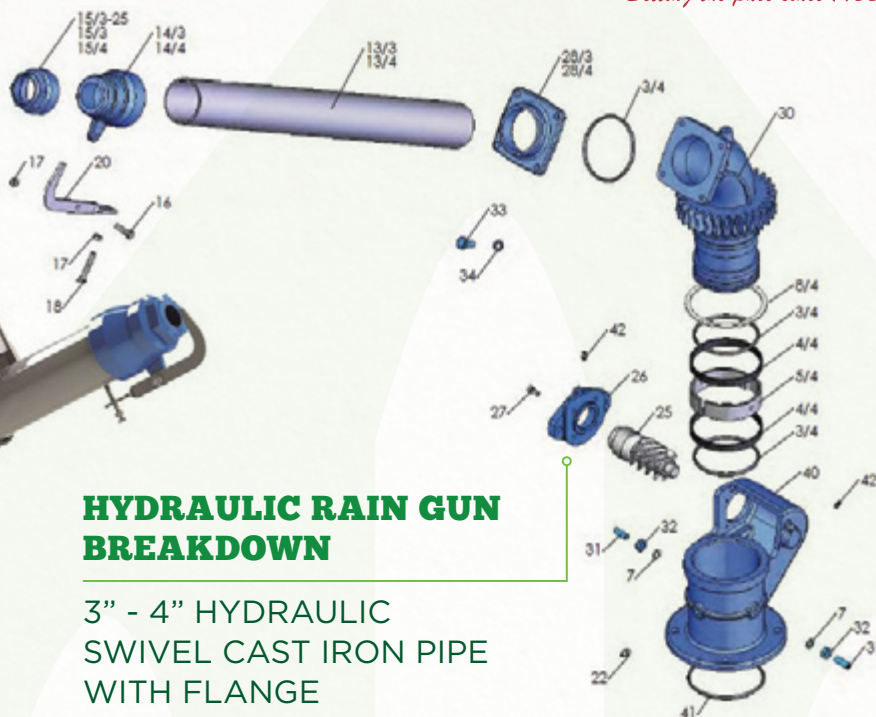
HYDRAULIC RAIN GUN

This **Hydraulic Rain Gun** includes a high resistance spheroidal cast iron, supplied with 1 O-Rings for coupling, easy greasing, rotation of 360°, break-sewage with galvanised pipe.



HYDRAULIC RAIN GUN BREAKDOWN

3" - 4" HYDRAULIC SWIVEL CAST IRON PIPE WITH FLANGE



PART NO.	DESCRIPTION
ABYJET1	Rain Gun Flanged Housing
ABYJET2	Rain Gun Base Bracket C/W Cog
ABYJET3/4	Rain Gun O-Ring For Flange
ABYJET4/4	Rain Gun Plastic Ring
ABYJET5/4	Rain Gun Centre Steel Ring
ABYJET7	Rain Gun Washer M10 x 16mm
ABYJHET8/4	Rain Gun Rubber Seal
ABYJET9	Rain Gun Brass Brushing
ABYJET10	Rain Gun Spiral Gear
ABYJET11	Rain Gun Shaft
ABYJET 11H	Rain Gun Manual Handle
ABYJET13/4	Rain Gun 4" Pipe
ABYJET14/4	Rain Gun 4" Nozzle Holder
ABYJET15/3	Rain Gun 3" Nozzle
ABYJET15/4	Rain Gun 4" Nozzle
ABYJET16	Rain Gun Deflector Screw
ABYJET17	Rain Gun Deflector Nut
ABYJET18	Rain Gun Deflector Adj. Screw
ABYJET20	Rain Gun Slurry Deflector
ABYJET21	Rain Gun Key
ABYJET22	Rain Gun Grease Nipple
ABYJET25	Rain Gun Spiral Gear (Hydraulic)
ABYJET26	Rain Gun Spiral Gear Bracket (Hydraulic)

PART NO.	DESCRIPTION
ABYJET27	Rain Gun Gear Bracket Bolt
ABYJET28/4	Rain Gun - 4" Flange
ABYJET29	Manual Rain Gun - Base Plate
ABYJET29H	Hydraulic Rain Gun - Base Plate
ABYJET30	Rain Gun Base Bracket C/W Cog
ABYJET31	Rain Gun Allen Stud
ABYJET32	Rain Gun Small Nut M10
ABYJET33	Rain Gun Flange Screw M10 x 25mm
ABYJET34	Rain Gun Flange Washer M10
ABYJET35	Rain Gun Spiral Gear (Manual)
ABYJET36	Rain Gun Spiral Gear Bracket Man
ABYJET37	Rain Gun Gear Bracket Bolt
ABYJET38	Rain Gun Washer M6
ABYJET39	Rain Gun Brass Washer
ABYJET40	Hydraulic Rain Gun - Base Plate
ABYJET41	Rain Gun O-Ring
ABYJET42	Rain Gun Lubricator
ABYJET50	Rain Gun Hydraulic Motor
ABYJET99	Manual Rain Gun Kit
ABYJET99H	Hydraulic Rain Gun Kit Less Motor
ABYBP2001/G	Rain Gun 150mm Swivel Joint 6"
ABYBP2001/H	Rain Gun 200mm Swivel Joint 8"



MZ GATE VALVES

Metaltecnica Zanollo (MZ) Gate Valves are fully designed, manufactured and tested in-house, and are built to the highest European standards.

MZ GATE VALVE

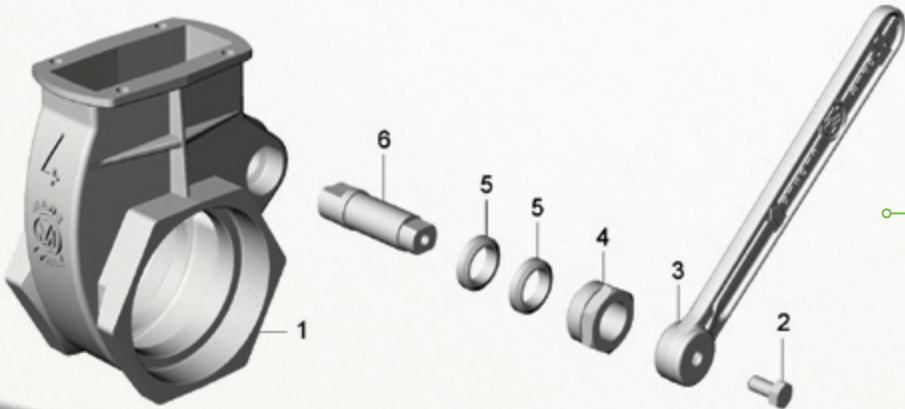
ART3-4



MZ REF.	PART NO.	DESCRIPTION
	ART3-4	4" Gate Valve Unit Complete (Thread to Thread)
	ART0034	4" Lever Gate Valve
1	ART3-4-1	4" Shutter Housing
2	ART3-4-11	4" Lever Screw
3	ART3-4-4	4" Shutter Lever
4	ART3-4-5	4" Brass Shutter Screw
5	ART3-4-8	4" Shaft Brushing
6	ART3-4-6	4" Lever Shaft Pin
7a/7b	ART3-4-2	4" Brass Shutter
8	ART3-4-10	4" Outer Shaft Lever
9	ART 3-4-12	4" Gasket
10	ART3-4-3	4" Top Housing Cover
11	ART6-6-11	Allen Stud

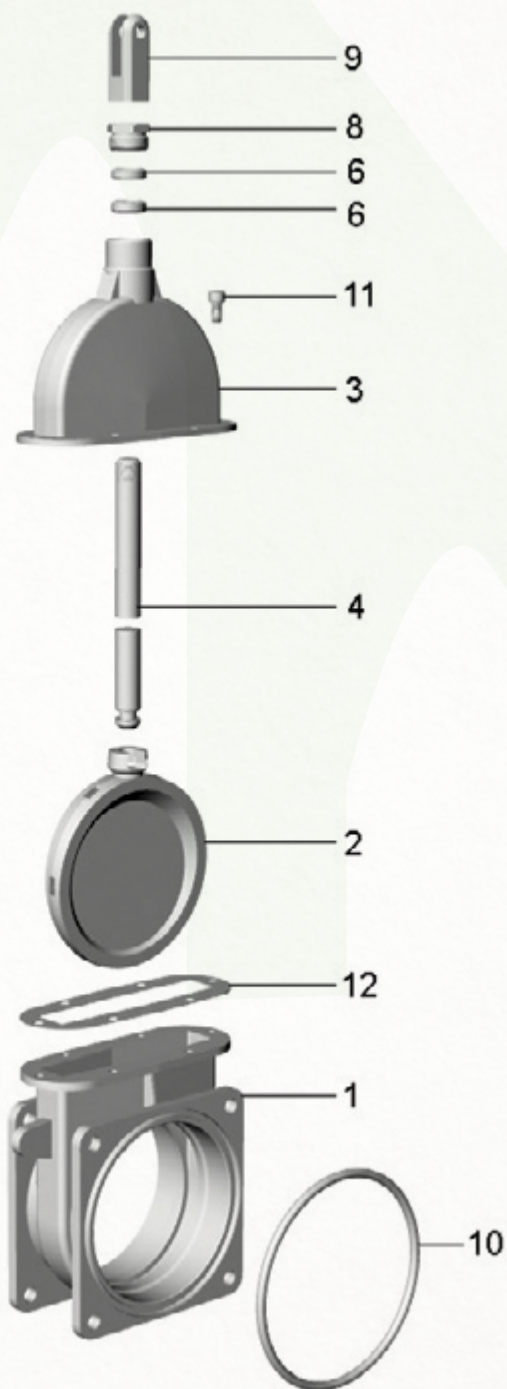
MZ GATE VALVE BREAKDOWN

ART3-4



MZ GATE VALVE

ART4F2 HEAVY DUTY
DOUBLE FLANGE
VALVE (NEW TYPE)



MZ REF.	PART NO.	DESCRIPTION
	ART4F2-6	6" Gate Valve Complete
	ART4F2/51-6	6" Double Flange Valve Complete with Ram & Spring
1	ART4F2-6-1	6" Heavy Duty Shutter Housing
2	ART4-6-2	6" Heavy Duty Shutter
3	ART4-6-3	6" Heavy Duty Bell Housing
4	ART4-6-4	6" Brass Rod
6	ART4-6-6	Gland Seal to suit 5" & 6"
8	ART4-6-8	Retaining Screw to suit 5" & 6"
9	ART 4-6-9	U-Clevis to suit 5" & 6" Valve
10	ART4-6-10	O-Ring
11	ART4-6-11	Allen Stud to suit 5" & 6" Valve
12	ART4-6-12	6" Gasket

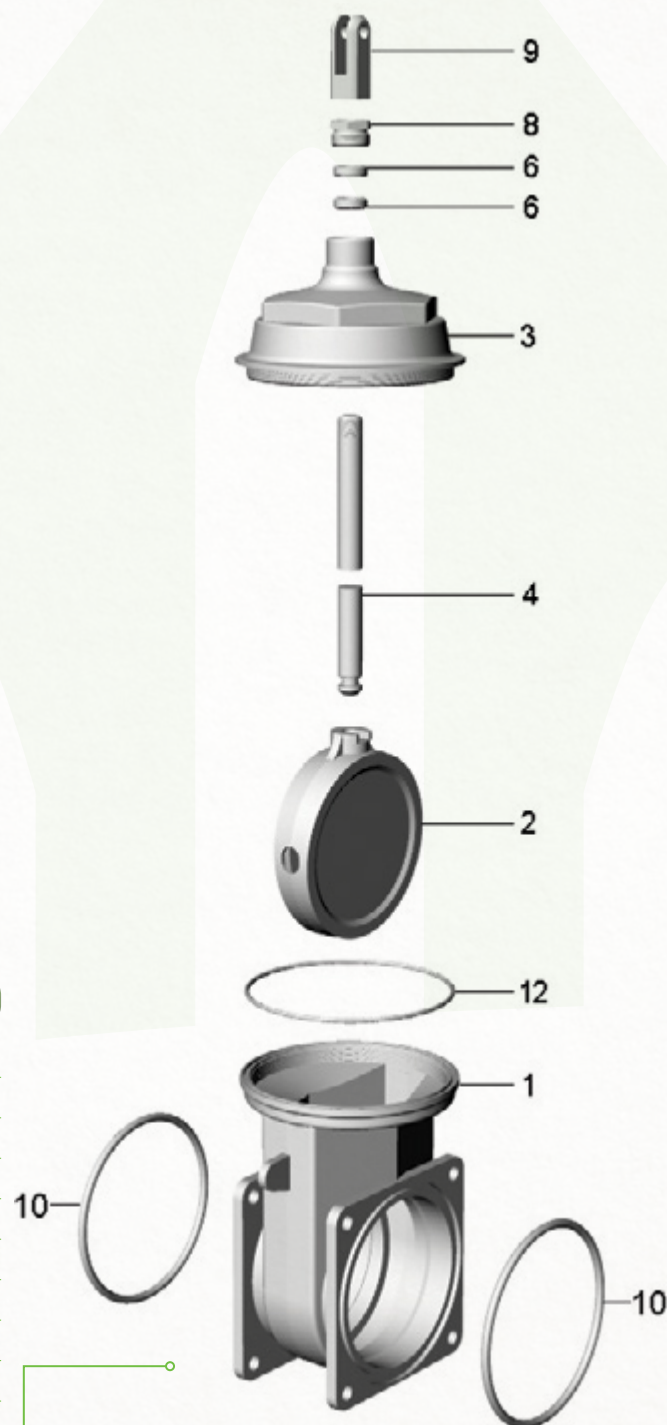
MZ GATE VALVE BREAKDOWN

ART4F2



MZ GATE VALVE

ART5F2 HEAVY DUTY
DOUBLE FLANGE
VALVE (OLD TYPE)



MZ REF.	PART NO.	DESCRIPTION
	ART5F2-6	6" H/D Gate Valve - Double Flange
1	ART5F2-6-1	6" Shutter Housing - Double Flange
2	ART5-6-2	6" Heavy Duty Shutter
3	ART5-6-3	6" Heavy Duty Top Housing Cover
4	ART5-6-4	6" Brass Rod
6	ART5-6-6	6" Gland Seal
8	ART5-6-8	6" Retaining Screw
9	ART5-6-9	6" U-Clevis
10	ART5-6-10	6" O-Ring
12	ART5-6-12	6" Gasket



For prices see **Page 13**
in **Q-PARTS Price List**

MZ GATE VALVE BREAKDOWN

ART5F2



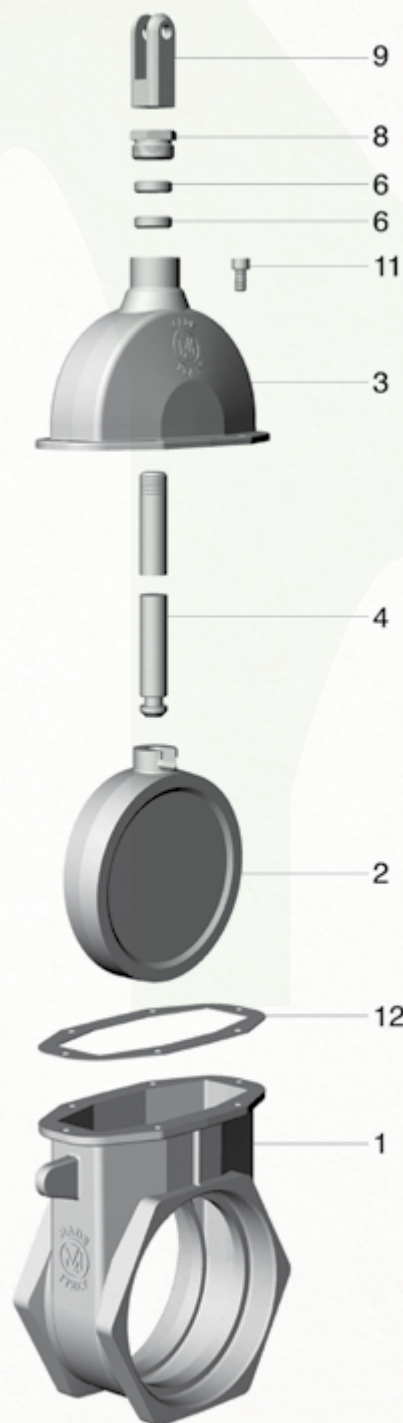
For prices see **Pages 13-14**
in **Q-PARTS Price List**



METALTECNICA
S.r.l.

MZ GATE VALVE

ART6 HEAVY DUTY
DOUBLE THREADED
VALVE



MZ REF.	PART NO.	DESCRIPTION
	ART6-5	5" Standard Gate Valve Complete
	ART6-6	6" Standard Gate Valve Complete
	ART6F-5	5" Standard Gate Valve Single Flange
	ART6F-5-1	5" Standard Single Flange Housing
	ART6F-6	6" Standard Gate Valve Single Flange
1	ART6-5-1	5" Standard Shutter Housing
2	ART6-5-2	5" Standard Shutter
3	ART6-5-3	5" Standard Bell Housing
4	ART6-5-4	5" Brass Rod
6	ART6-5-6	5" Gland Seal
8	ART6-5-8	5" Retaining Screw
9	ART6-5-9	5" U-Clevis
10	ART6-5-10	5" O-Ring
12	ART6-5-12	5" Gasket
1	ART6-6-1	6" Standard Shutter Housing
2	ART6-6-2	6" Standard Shutter
3	ART6-6-3	6" Standard Bell Housing
4	ART6-6-4	6" Brass Rod
6	ART6-6-6	Gland Seal to suit 5" & 6" Valve
8	ART6-6-8	Retaining Screw to suit 5" & 6"
9	ART6-6-9	U-Clevis to suit 5" & 6" Valve
11	ART6-6-11	Allen Stud to suit 5" & 6" Valve
12	ART6-6-12	6" Gasket
1	ART6F-6-1	6" Standard Single Flange Housing
10	ART6F-6-10	O-Ring to suit 5" & 6" Valve

MZ GATE VALVE BREAKDOWN

ART6F2



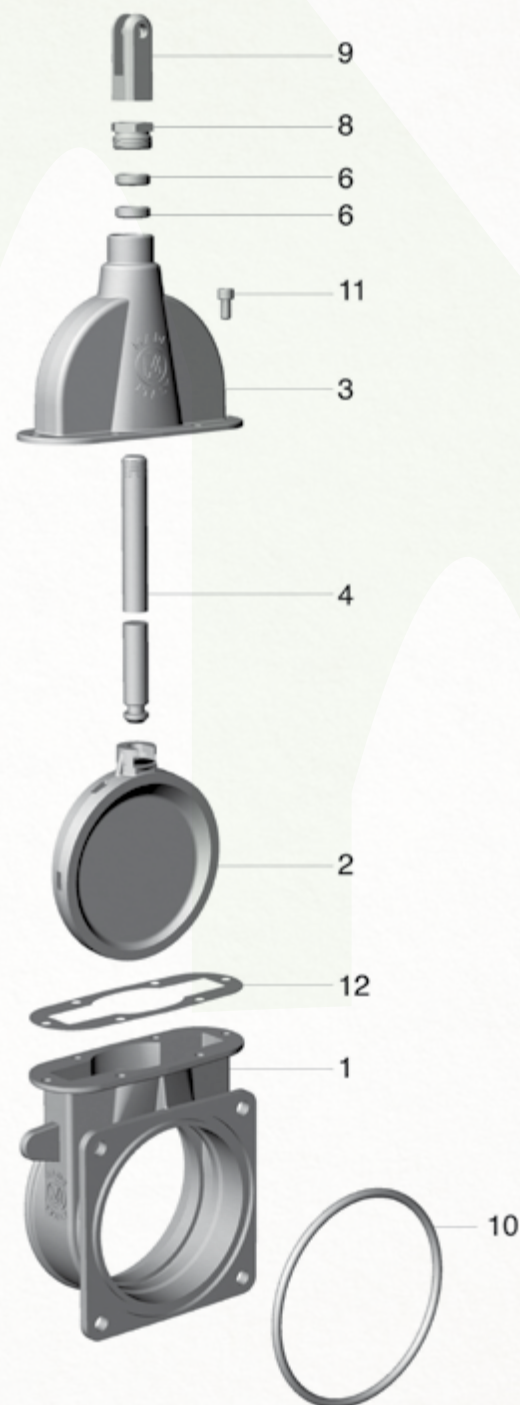
For prices see **Page 14**
in **Q-PARTS Price List**

MZ GATE VALVE

ART7F STANDARD
FLANGE TO THREAD
VALVE



MZ REF.	PART NO.	DESCRIPTION
	ART7F-5	5" Light Gate Valve Single Flange
	ART7F-6	6" Light Gate Valve Single Flange
1	ART7F-5-1	5" Light Housing Single Flange
1	ART7F-6-1	6" Light Housing Single Flange
10	ART7F-6-10	Art 7F - 6" O-Ring
1	ART7-5-1	5" Light Duty Shutter Housing
2	ART7-5-2	5" Light Duty Brass Shutter
3	ART7-5-3	5" Light Duty Bell Housing
4	ART7-5-4	5" Brass Rod
6	ART7-5-6	5" Gland Seal
8	ART7-5-8	5" Retaining Screw
9	ART7-5-9	5" U-Clevis
10	ART7-5-10	5" O-Ring
12	ART7-5-12	5" Gasket
1	ART7-6-1	6" Light Duty Shutter Housing
2	ART7-6-2	6" Light Duty Brass Shutter
3	ART7-6-3	6" Light Duty Bell Housing
4	ART7-6-4	6" Brass Rod
6	ART7-6-6	Gland Seal to suit 5" & 6" Valve
8	ART7-6-8	Retaining Screw to suit 5" & 6"
9	ART7-6-9	U - Clevis to suit 5" & 6" Valve
10	ART7-6-10	6" O-Ring
11	ART6-6-11	Allen Stud
12	ART7-6-12	6" Gasket



MZ GATE VALVE BREAKDOWN

ART7F



For prices see **Pages 14-15**
in **Q-PARTS Price List**

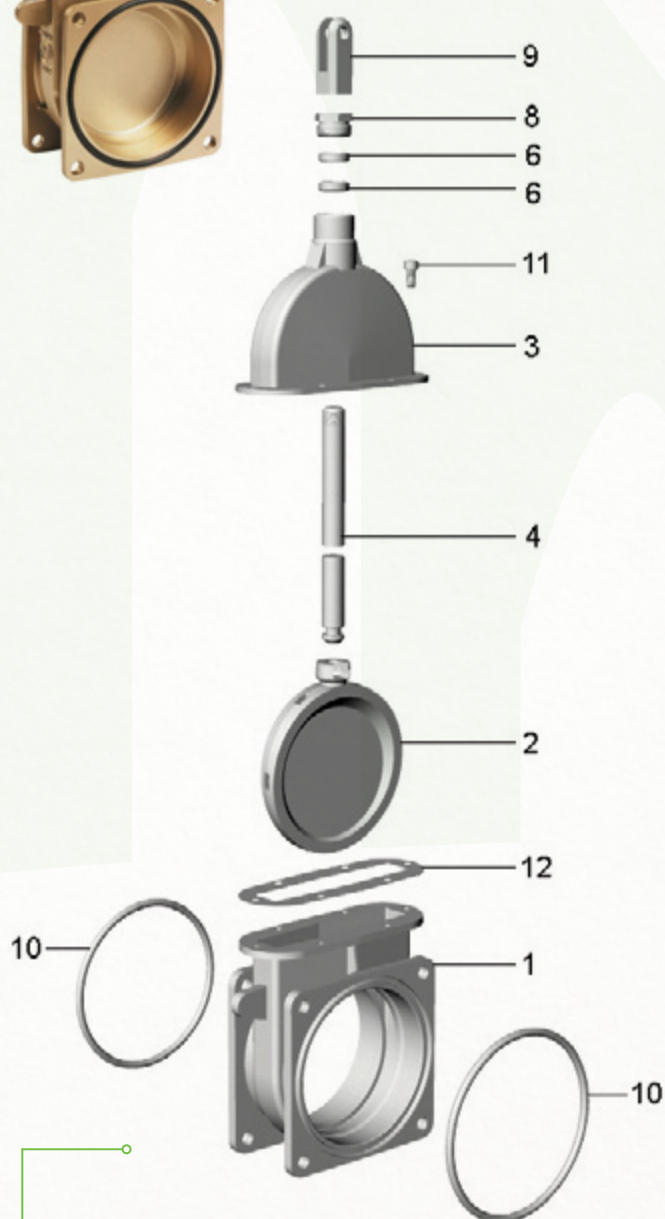


METALTECNICA
S.r.l.

MZ GATE VALVE

ART7F2 4"/5"/6"/8"
LIGHT DUTY DOUBLE
FLANGE VALVES

MZ REF.	PART NO.	DESCRIPTION
	ART7F2-4	4" Gate Valve Unit
	ART7F2/51 4"	4" Double Flange Valve Complete with Ram & Spring
	ART7F2/51 8"	8" Double Flange Valve Complete with Ram & Spring
	ART7F2-5	5" Double Flange Valve
	ART7F2-6	6" Light Gate Valve Double Flange
	ART7F2-8	8" Light Gate Valve Double Flange
3	ART7-4-3	4" Top Housing Cover
1	ART7F2-4-1	4" Shutter Housing
1	ART7F2-6-1	6" Light Housing Double Flange
1	ART7-5-1	5" Light Duty Shutter Housing
2	ART7-5-2	5" Light Duty Brass Shutter
3	ART4-4-3	Bell Housing For ART4
3	ART6-4-3	4" Housing Top Cover
3	ART7-5-3	5" Light Duty Bell Housing
4	ART7-5-4	5" Brass Rod
6	ART7-5-6	5" Gland Seal
8	ART7-5-8	5" Retaining Screw
9	ART7-5-9	5" U-Clevis
10	ART7-5-10	5" O-Ring
12	ART7-5-12	5" Gasket
1	ART7-6-1	6" Light Duty Shutter Housing
1	ART6-8-1	8" Shutter Housing
2	ART7-6-2	6" Light Duty Brass Shutter
3	ART7-6-3	6" Light Duty Bell Housing
4	ART7-6-4	6" Brass Rod
4	ART6-8-4	8" Brass Rod
6	ART7-6-6	Gland Seal to suit 5" & 6" Valve
8	ART7-6-8	Gland Nut 5" & 6"
8	ART6-8-8	Gland Nut For 8" Valve
9	ART7-6-9	U-Clevis to suit 5" & 6" Valve
10	ART7-6-10	6" O-Ring
11	ART6-6-11	Allen Stud
12	ART7-6-12	6" Gasket
3	ART6-8-3	Housing Top Cover (ART 6 - 8")
10	ART6F2-8-10	O-Ring (ART 6F2 - 8")



MZ GATE VALVE BREAKDOWN

ART7F2 / ART8F2

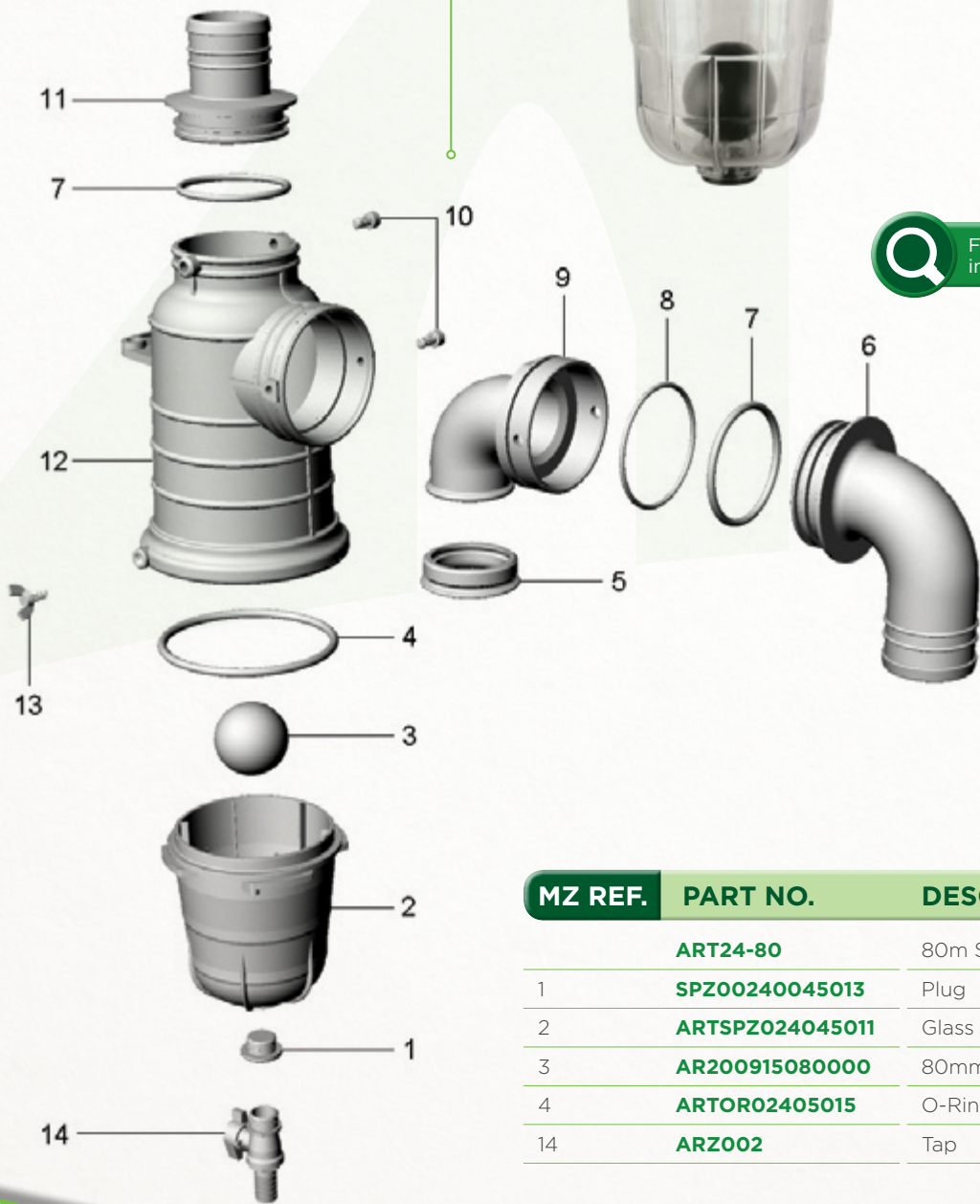


MZ GATE VALVE

ART24-80 80M SIPHON
VALVE COMPLETE

MZ GATE VALVE BREAKDOWN

ART24-80 80M SIPHON VALVE
COMPLETE



Q For prices see **Pages 15-16**
in **Q-PARTS Price List**

MZ REF.	PART NO.	DESCRIPTION
	ART24-80	80m Siphon Valve Complete
1	SPZ00240045013	Plug
2	ARTSPZ024045011	Glass Bowl
3	AR200915080000	80mm Ball (ABY2135-80)
4	ARTOR02405015	O-Ring
14	ARZ002	Tap

SAFETY & DECOMPRESSION VALVES

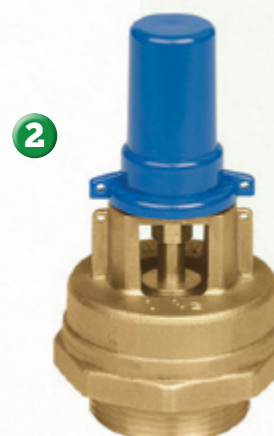
SAFETY & DECOMPRESSION VALVE 1

PART NO.	DESCRIPTION
ABY2092-2	2" Standard Brass Gate Valve
ABY2092-2H	2" Standard Brass Gate Valve Handle
ABY2092-4	4" Standard Brass Gate Valve



SAFETY & DECOMPRESSION VALVE 2

PART NO.	DESCRIPTION
ART9-1 1/2	1 1/2" Decompression Valve <i>Specifications: 2000+</i>



SAFETY & DECOMPRESSION VALVE 3

PART NO.	DESCRIPTION
ART13-1 1/2	1 1/2" Safety Valve <i>Specifications: Set to 0.5 Bar</i>
ART13-2	ART13 2" Safety Valve Unit
ART13-9	Pull Ring for Safety Valve



For prices see **Page 16**
in **Q-PARTS Price List**



RIV GATE VALVES

RIV Gate Valves are built to a very high standard. Each production phase is subject to a very strict quality control, with the final 100% test of the finished product.

RIV GATE VALVE

RV7F2/6 6" DOUBLE FLANGE
RIV VALVE (PERLA)

	PART NO.	DESCRIPTION
1	ABY-RIV9822-6	Bell Housing
	ABY-RIV9840-6	Packing
2	ABY-RIV9834-6	Gasket
3	ABY-RIV9829-6	Stem
4	ABY-RIV9815-6	Shutter

1



2



3



4



For prices see **Page 16**
in **Q-PARTS Price List**

RIV GATE VALVE

RIV4F2/51-6 RIV 6" DOUBLE
FLANGE VALVE COMPLETE WITH
RAM & SPRING (CENTURION)

	PART NO.	DESCRIPTION
1	ABY-RIV9816	Shutter
2	ABY-RIV9829-6	Stem
3	ABY-RIV9825	Bell Housing
	ABY-RIV9840-6	Packing
4	ABY-RIV9837-6	Gasket

1



2



3



4



For prices see **Page 16**
in **Q-PARTS Price List**

GALVANISED FITTINGS

Our **Galvanised Fittings** are heavy duty and are manufactured to the highest standard, to meet the stringent quality demands of our manufacturing requirements.

ITALIAN COUPLINGS

ITALIAN **MALE** FITTINGS



ITALIAN COUPLINGS

ITALIAN **MALE** REDUCERS



ITALIAN COUPLINGS

ITALIAN **FEMALE** FITTINGS



PART NO.

DESCRIPTION

ABY2566-50	50mm Galvanised Male Fittings
ABY2566-60	60mm Galvanised Male Fittings
ABY2566-63	63mm Galvanised Male Fittings
ABY2566-70	70mm Galvanised Male Fittings
ABY2566-76	76mm Galvanised Male Fittings
ABY2566-80	80mm Galvanised Male Fittings
ABY2566-100	100mm Galvanised Male Fittings
ABY2566-125	125mm Galvanised Male Fittings
ABY2566-150	150mm Galvanised Male Fittings

PART NO.

DESCRIPTION

ABY2566-100/76	100mm Male - 76mm Hose End
ABY2566-125/100	125mm Male - 100mm Hose End
ABY2566-150/50	150mm Male - 50mm Hose End
ABY2566-150/70	150mm Male - 70mm Hose End
ABY2566-150/76	150mm Male - 76mm Hose End
ABY2566-150/80	150mm Male - 80mm Hose End
ABY2566-150/100	150mm Male - 100mm Hose End
ABY2566-150/125	150mm Male - 125mm Hose End

PART NO.

DESCRIPTION

ABY2573-50	50mm Galvanised Female Fittings
ABY2573-60	60mm Galvanised Female Fittings
ABY2573-70	70mm Galvanised Female Fittings
ABY2573-76	76mm Galvanised Female Fittings
ABY2573-80	80mm Galvanised Female Fittings
ABY2573-100	100mm Galvanised Female Fittings
ABY2573-125	125mm Galvanised Female Fittings
ABY2573-150	150mm Galvanised Female Fittings
ABY2573-200	200mm Galvanised Female Fittings



For prices see **Pages 16-17**
in **Q-PARTS Price List**

ITALIAN COUPLINGS

ITALIAN FEMALE REDUCERS



PART NO.	DESCRIPTION
ABY2573-100/50	100mm Female - 50mm Hose End
ABY2573-100/76	100mm Female - 76mm Hose End
ABY2573-125/50	125mm Female - 50mm Hose End
ABY2573-125/70	125mm Female - 70mm Hose End
ABY2573-125/80	125mm Female - 80mm Hose End
ABY2573-125/100	125mm Female - 100mm Hose End
ABY2573-150/50	150mm Female - 50mm Hose End
ABY2573-150/60	150mm Female - 60mm Hose End
ABY2573-150/70	150mm Female - 70mm Hose End
ABY2573-150/76	150mm Female - 76mm Hose End
ABY2573-150/80	150mm Female - 80mm Hose End
ABY2573-150/100	150mm Female - 100mm Hose End
ABY2573-150/125	150mm Female - 125mm Hose End

ITALIAN COUPLINGS

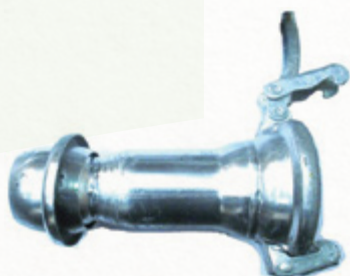
ITALIAN FEMALE TO MALE INCREASERS



PART NO.	DESCRIPTION
ABY2542-80-100	80mm - 100mm Female to Male Increaser
ABY2542-80-150	80mm - 150mm Female to Male Increaser
ABY2542-100-125	100mm - 125mm Female to Male Increaser
ABY2542-125-150	125mm - 150mm Female to Male Increaser
ABY2542-125-200	125mm - 200mm Female to Male Increaser

ITALIAN COUPLINGS

ITALIAN FEMALE TO MALE REDUCERS



PART NO.	DESCRIPTION
ABY2530-100-50	100mm - 50mm Female to Male Reducer
ABY2530-125-80	125mm - 80mm Female to Male Reducer
ABY2530-125-100	125mm - 100mm Female to Male Reducer
ABY2530-150-50	150mm - 50mm Female to Male Reducer
ABY2530-150-80	150mm - 80mm Female to Male Reducer
ABY2530-150-100	150mm - 100mm Female to Male Reducer
ABY2530-150-125	150mm - 125mm Female to Male Reducer

ITALIAN COUPLINGS

ITALIAN FEMALE PLUGS



PART NO.	DESCRIPTION
ABY2554-50	50mm Female Plug
ABY2554-60	60mm Female Plug
ABY2554-80	80mm Female Plug
ABY2554-100	100mm Female Plug
ABY2554-125	125mm Female Plug
ABY2554-150	150mm Female Plug
ABY2554-200	200mm Female Plug



For prices see **Pages 17-18**
in **Q-PARTS Price List**

ITALIAN COUPLINGS

ITALIAN MALE PLUGS



PART NO.	DESCRIPTION
ABY2560-50	50mm Male Plug
ABY2560-60	60mm Male Plug
ABY2560-80	80mm Male Plug
ABY2560-100	100mm Male Plug
ABY2560-125	125mm Male Plug
ABY2560-150	150mm Male Plug

ITALIAN COUPLINGS

RUBBER O-RING TO SUIT ITALIAN FITTINGS



PART NO.	DESCRIPTION
ABY2620-50	50mm Rubber O-Ring
ABY2620-60	60mm Rubber O-Ring
ABY2620-80	80mm Rubber O-Ring
ABY2620-100	100mm Rubber O-Ring
ABY2620-120	120mm Rubber O-Ring
ABY2620-120H	120mm Heavy Duty Rubber O-Ring
ABY2620-150	150mm Rubber O-Ring
ABY2620-150M	150mm Medium Rubber O-Ring
ABY2620-150H	150mm Heavy Duty Rubber O-Ring
ABY2620-200H	200mm Heavy Duty Rubber O-Ring
ABY2620-250	250mm Rubber O-Ring

ITALIAN COUPLINGS

ITALIAN THREADED MALE FITTINGS



PART NO.	DESCRIPTION
ABY2594-50	50mm Threaded Male Fitting
ABY2594-80	80mm Threaded Male Fitting
ABY2594-100	100mm Threaded Male Fitting
ABY2594-125	125mm Threaded Male Fitting
ABY2594-150	150mm Threaded Male Fitting

ITALIAN COUPLINGS

ITALIAN THREADED FEMALE FITTINGS



PART NO.	DESCRIPTION
ABY2601-50	50mm Threaded Female Fitting
ABY2601-75	75mm Threaded Female Fitting
ABY2601-80	80mm Threaded Female Fitting
ABY2601-100	100mm Threaded Female Fitting
ABY2601-125	125mm Threaded Female Fitting
ABY2601-150	150mm Threaded Female Fitting



For prices see **Pages 18-19**
in **Q-PARTS Price List**

ITALIAN COUPLINGS

ITALIAN 90 DEGREE **FEMALE** SPREAD ATTACH WITH RUBBER CONE



PART NO.	DESCRIPTION
ABY2220-6	6" Female Spread Attach (Rubber)

ITALIAN COUPLINGS

ITALIAN 90 DEGREE **MALE** SPREAD ATTACH WITH RUBBER CONE



PART NO.	DESCRIPTION
ABY2220-6M	6" Male Spread Attach (Rubber)

ITALIAN COUPLINGS

ITALIAN 90 DEGREE **FEMALE** SPREAD ATTACH WITH METAL CONE



PART NO.	DESCRIPTION
ABY2230-150F	150mm Female 90 Bend & Cone (Metal)

ITALIAN COUPLINGS

ITALIAN 90 DEGREE **MALE** SPREAD ATTACH WITH METAL CONE



PART NO.	DESCRIPTION
ABY2230-150M	150mm Male 90 Bend & Cone (Metal)



For prices see **Page 19**
in **Q-PARTS Price List**

ITALIAN COUPLINGS

ITALIAN 90 DEGREE **MALE** BEND TO HOSE END



PART NO.	DESCRIPTION
ABY2580-50M	50mm 90 Elbow Male - Hose End
ABY2580-80M	80mm 90 Elbow Male - Hose End
ABY2580-100M	100mm 90 Elbow Male - Hose End
ABY2580-125M	125mm 90 Elbow Male - Hose End
ABY2580-150M	150mm 90 Elbow Male - Hose End

ITALIAN COUPLINGS

ITALIAN 90 DEGREE **FEMALE** BEND TO HOSE END



PART NO.	DESCRIPTION
ABY2580-50	50mm 90 Elbow Female - Hose End
ABY2580-80	80mm 90 Elbow Female - Hose End
ABY2580-100	100mm 90 Elbow Female - Hose End
ABY2580-125	125mm 90 Elbow Female - Hose End
ABY2580-150	150mm 90 Elbow Female - Hose End

ITALIAN COUPLINGS

ITALIAN **MALE** TO FEMALE 90 DEGREE BEND



PART NO.	DESCRIPTION
ABY2500-60	60mm M/F 90 Degree Bend
ABY2500-80	80mm M/F 90 Degree Bend
ABY2500-100	100mm M/F 90 Degree Bend
ABY2500-125	125mm M/F 90 Degree Bend
ABY2500-150	150mm M/F 90 Degree Bend

ITALIAN COUPLINGS

90 DEGREE BEND WITH HOSE END BOTH SIDES



PART NO.	DESCRIPTION
ABY2840-50	50mm 90 Degree Bend
ABY2840-75	75mm 90 Degree Bend
ABY2840-80	80mm 90 Degree Bend
ABY2840-100	100mm 90 Degree Bend
ABY2840-125	125mm 90 Degree Bend
ABY2840-150	150mm 90 Degree Bend



For prices see **Pages 19-20** in **Q-PARTS Price List**

ITALIAN COUPLINGS

HANDLES & HOOKS TO SUIT ITALIAN FEMALE FITTINGS



	PART NO.	DESCRIPTION
1	ABY2650	Handle for Female Fitting
2	ABY2651	Short Hook for Female Fitting
3	ABY2651L	Long Hook for Female Fitting
4	ABY2651-B	Weld-On Hook Bracket
	ABY2652	Short Fitting Rivets
	ABY2652L	Long Fitting Rivets

ITALIAN COUPLINGS

ITALIAN MALE & FEMALE WELD-ON ENDS & MALE RING



	PART NO.	DESCRIPTION
1	ABY2558-100	100mm Weld-On Female Only
	ABY2558-150	150mm Weld-On Female Only
	ABY2558-200	200mm Weld-On Female Only
2	ABY2568-100	100mm Weld-On Male Only
	ABY2568-125	125mm Weld-On Male Only
	ABY2568-150	150mm Weld-On Male Only
	ABY2568-200	200mm Weld-On Male Only
3	ABY2805-50	50mm Male Ring
	ABY2805-80	80mm Male Ring
	ABY2805-100	100mm Male Ring
	ABY2805-125	125mm Male Ring
	ABY2805-150	150mm Male Ring
	ABY2805-200	200mm Male Ring

ITALIAN COUPLINGS

5"/6" RUBBER SPRAY NOZZLES



PART NO.	DESCRIPTION	CLIP SIZE
ABY2160-5	5" Rubber Spray Nozzle	CLP149-161
ABY2160-6	6" Rubber Spray Nozzle	CLP175-187



For prices see **Pages 20-21**
in **Q-PARTS Price List**

ITALIAN COUPLINGS

ITALIAN **MALE** FITTINGS COMPLETE WITH 4-HOLE FLANGE



PART NO.	DESCRIPTION
ABY2820-75	75mm Male Fitting Complete with Flange
ABY2820-80	80mm Male Fitting Complete with Flange
ABY2820-100	100mm Male Fitting Complete with Flange
ABY2820-125	125mm Male Fitting Complete with Flange
ABY2820-150	150mm Male Fitting Complete with Flange
ABY2820-150S	150mm Male Fitting Complete with Flange (Short)
ABY2820-200	200mm Male Fitting Complete with Flange

ITALIAN COUPLINGS

ITALIAN **FEMALE** FITTINGS COMPLETE WITH 4-HOLE FLANGE



PART NO.	DESCRIPTION
ABY2830-100	100mm Female Fitting Complete with Flange
ABY2830-125	125mm Female Fitting Complete with Flange
ABY2830-150	150mm Female Fitting Complete with Flange

ITALIAN COUPLINGS

THREADED FITTINGS TO 4-HOLE FLANGE



PART NO.	DESCRIPTION
ABY2810-50	50mm Threaded Pipe to Flange
ABY2810-100	100mm Threaded Pipe to Flange
ABY2810-125	125mm Threaded Pipe to Flange
ABY2810-150	150mm Threaded Pipe to Flange

ITALIAN COUPLINGS

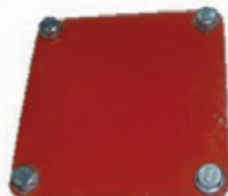
RUBBER GASKETS 4-HOLE

1



4-HOLE BLANK PLATE

2



8-HOLE RUBBER GASKET

3



	PART NO.	DESCRIPTION
1	ABY2080	Rubber Gasket 4-Hole to suit 4-Hole Flange Fitting
	ABY2080-200	Rubber Gasket 4-Hole to suit 8" Valve
2	ABY2080/1	4-Hole Blank Plate
3	ABY2081	Rubber Gasket 8-Hole Square



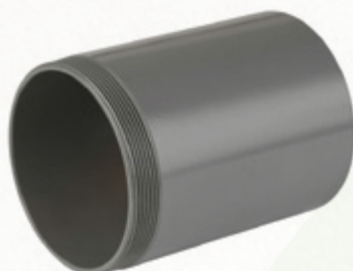
For prices see **Pages 21-22** in **Q-PARTS Price List**



For prices see **Page 22**
in **Q-PARTS Price List**

ITALIAN COUPLINGS

THREADED SLEEVES



PART NO.	DESCRIPTION
ABY2635-3	76mm Threaded Sleeve (3")
ABY2635-4S	4" Short Threaded Sleeve
ABY2635-40	40mm Threaded Sleeve
ABY2635-50	50mm Threaded Sleeve
ABY2635-80	80mm Threaded Sleeve
ABY2635-100	100mm Threaded Sleeve
ABY2635-100S	100mm Threaded Sleeve (Short)
ABY2635-125	125mm Threaded Sleeve
ABY2635-150	150mm Threaded Sleeve N.B.L.=150
ABY2635-150S	150mm Threaded Sleeve (Short)
ABY2635-200	200mm Threaded Sleeve

ITALIAN COUPLINGS

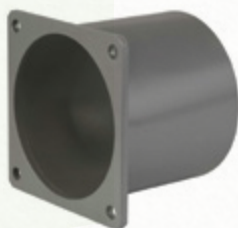
THREADED SLEEVE REDUCER



PART NO.	DESCRIPTION
ABY2635-125-100	125/100mm Threaded Sleeve

ITALIAN COUPLINGS

FLANGE SLEEVE TO SUIT FLANGE VALVES



PART NO.	DESCRIPTION
ABY2085	Flange Sleeve for Flange Valve
ABY2085F	Tank Socket Flange Only

ITALIAN COUPLINGS

DOUBLE FLANGE SLEEVES ONLY



PART NO.	DESCRIPTION
ABY2086	Double Flange Sleeve
ABY2086L	Double Flange Sleeve (Long)

ITALIAN COUPLINGS

FLANGE TO SLEEVE TO 6" HOSE BEND



PART NO.	DESCRIPTION
ABY2301-6-HF	Flange to Sleeve to 6" Hose Bend

ITALIAN MALE & FEMALE SPEADING ATTACHMENTS

Three clamp heavy duty spreading attachments (male and female) complete with precision plates.

ITALIAN SPEADING ATTACHMENT

6" **FEMALE**
INVERTED SPREAD
ATTACHMENT



PART NO.

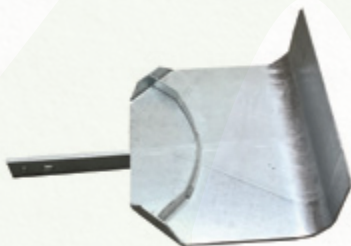
ABY2320-6

DESCRIPTION

6" Female Inverted Spread Attachment Complete

ITALIAN SPEADING ATTACHMENT

INVERTED SPLASH
PLATE



PART NO.

ABY2320-P

DESCRIPTION

Inverted Splash Plate Only

ITALIAN SPEADING ATTACHMENT

6" **MALE**
INVERTED SPREAD
ATTACHMENT



PART NO.

ABY2320-6M

DESCRIPTION

6" Male Inverted Spread Attachment Complete

ITALIAN SPEADING ATTACHMENT

INVERTED
ATTACHMENT -
FEMALE BEND



PART NO.

ABY2320-B

DESCRIPTION

Inverted Attachment - Female Bend



For prices see **Pages 22-23**
in **Q-PARTS Price List**


 For prices see **Page 23**
 in **Q-PARTS Price List**

ITALIAN QUICK ATTACHMENTS

6" **MALE** QUICK ATTACHMENT HOSE FITTINGS



PART NO.	DESCRIPTION
ABY2300-6MAJ	6" Quick Attachment Hose Fitting to suit Major
ABY2300-6MAJR	6" Quick Attachment Hose Fitting to suit Major (Right Handle)

ITALIAN QUICK ATTACHMENTS

6" **FEMALE** QUICK ATTACHMENT HOSE FITTINGS



PART NO.	DESCRIPTION
ABY2301-6MAJ	6" Female End for Quick Attachment Major
ABY2301-6MAJ/50	150-50 Female for Quick Attachment
ABY2301-6MAJ/76	150-76 Female for Quick Attachment
ABY2301-6MAJ/100	150-100 Female for Quick Attachment
ABY2301-6MAJ/125	150-125 Female for Quick Attachment

ITALIAN QUICK ATTACHMENTS

WASH DOWN NOZZLES



PART NO.	DESCRIPTION
ABY2617-50	50mm Wash Hose Nozzle
ABY2617-50S	50mm Wash Nozzle Band Spreader
ABY2617-60	60mm Wash Hose Nozzle

ITALIAN QUICK ATTACHMENTS

STRAIGHT HOSE JOINERS



PART NO.	DESCRIPTION
ABY2608-40	40mm Straight Joiner
ABY2608-50	50mm Straight Joiner
ABY2608-60	60mm Straight Joiner
ABY2608-63	63mm Straight Joiner
ABY2608-70	70mm Straight Joiner
ABY2608-76	76mm Straight Joiner
ABY2608-80	80mm Straight Joiner
ABY2608-100	100mm Straight Joiner
ABY2608-125	125mm Straight Joiner
ABY2608-150	150mm Straight Joiner

ITALIAN QUICK ATTACHMENTS

MALE TO MALE REDUCER



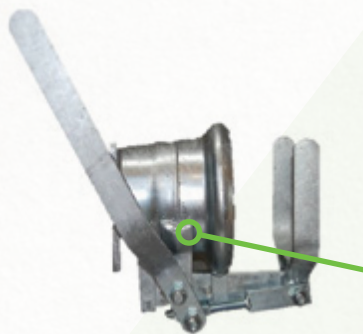
PART NO.	DESCRIPTION
ABY2531-150-100	150mm - 100mm Male to Male Reducer

PERROT COUPLINGS

Perrot Couplings are manufactured from galvanised steel with a rubber gasket. The couplings have a long life due to the high quality steel. The couplings are available from 2 "to 8". The Perrot hose couplings are very widely used in the agriculture and industrial sectors.

PERROT COUPLINGS

PERROT 6"/8" QUICK ATTACHMENTS FEMALE



PART NO.	DESCRIPTION
ABY2300-6N	6" Quick Attachment Female End
ABY2300-6N-R	6" Quick Attachment Female (Right)
ABY2300-6H	Handle for 6" Quick Attachment
ABY2300-8	8" Quick Attachment Fitting

Our heavy duty 6" quick attach coupling is reinforced at the point of highest impact

PERROT COUPLINGS

PERROT 6" QUICK ATTACHMENT HOSE FITTINGS



PART NO.	DESCRIPTION
ABY2301-5	125mm Male Quick Attachment
ABY2301-6	150mm Male Quick Attachment
ABY2301-8	200mm Male Quick Attachment

PERROT COUPLINGS

PERROT QUICK ATTACHMENT REDUCERS (MALE TO HOSE END)



PART NO.	DESCRIPTION
ABY2301-125/76	125mm-76mm Male for Quick Attachment
ABY2301-150/50	150mm-50mm Male for Quick Attachment
ABY2301-150/63	150mm-63mm Male for Quick Attachment
ABY2301-150/70	150mm-70mm Male for Quick Attachment
ABY2301-150/76	150mm-76mm Male for Quick Attachment
ABY2301-150/80	150mm-80mm Male for Quick Attachment
ABY2301-150/100	150mm-100mm Male for Quick Attachment
ABY2301-150/125	150mm-125mm Male for Quick Attachment

PERROT COUPLINGS

PERROT FEMALE HOSE ENDS



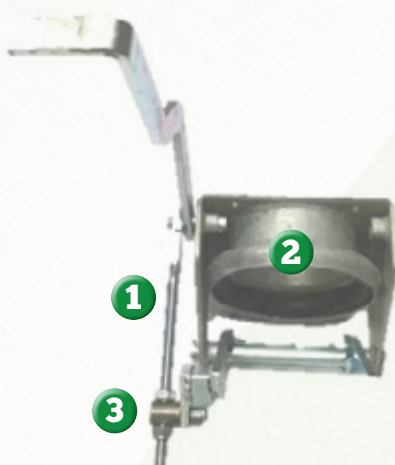
PART NO.	DESCRIPTION
ABY2302-6	150mm Female End for Quick Attachment
ABY2302-8	200mm Female End for Quick Attachment



For prices see **Page 24**
in **Q-PARTS Price List**

PERROT COUPLINGS

ABBEY DESIGNED
PERROT TYPE
COMPLETE
FEMALE QUICK
ATTACHMENT



QUICK
ATTACHMENT
BAR COMPLETE
WITH END



5"/6" WELDS
ON **FEMALE**
END FOR QUICK
ATTACHMENT



HANDLE
ATTACHMENT
PIVOT



PART NO. DESCRIPTION

ABY2300-5	5" Female Quick Attachment
ABY2300-6	6" Female Quick Attachment
ABY2300-6R	6" Female Quick Attachment with Right Handle

PART NO. DESCRIPTION

ABY2300-B	Quick Attachment Bar Complete with End
------------------	----------------------------------------

PART NO. DESCRIPTION

ABY2301-5F	5" Weld On Female End for Quick Attachment
ABY2301-6F	6" Weld On Female End for Quick Attachment

PART NO. DESCRIPTION

ABY2303	Handle Attachment Pivot
----------------	-------------------------



For prices see **Pages 24-25**
in **Q-PARTS Price List**

BAUER COUPLINGS

Bauer Couplings provide a quick and easy way to join many lengths of hose together. They can be used for loading and unloading road tankers, including slurry tankers.

BAUER COUPLINGS

BAUER MALE COUPLINGS



PART NO.	DESCRIPTION
ABY2730-50	50mm Male Coupling
ABY2730-76	76mm Male Coupling
ABY2730-100	100mm Male Coupling
ABY2730-125	125mm Male Coupling
ABY2730-150	150mm Male Coupling

BAUER COUPLINGS

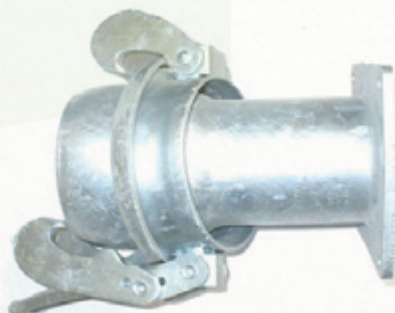
BAUER FEMALE COUPLINGS



PART NO.	DESCRIPTION
ABY2740-50	50mm Female Coupling
ABY2740-76	76mm Female Coupling
ABY2740-100	100mm Female Coupling
ABY2740-125	125mm Female Coupling
ABY2740-150	150mm Female Coupling

BAUER COUPLINGS

BAUER MALE TO FLANGE COUPLINGS



PART NO.	DESCRIPTION
ABY2790-100	100mm Flange Male
ABY2790-125	125mm Flange Male
ABY2790-150	150mm Flange Male

BAUER COUPLINGS

BAUER FEMALE COMPLETE WITH FLANGE



PART NO.	DESCRIPTION
ABY2710-100	100mm Flange Female
ABY2710-125	125mm Flange Female
ABY2710-150	150mm Flange Female



For prices see **Page 25**
in **Q-PARTS Price List**

BAUER COUPLINGS

BAUER FEMALE PLUGS



PART NO.	DESCRIPTION
ABY2750-100	100mm Female Female Plug
ABY2750-125	125mm Female Female Plug
ABY2750-150	150mm Female Female Plug

BAUER COUPLINGS

BAUER MALE PLUGS



PART NO.	DESCRIPTION
ABY2760-100	100mm Male Plug
ABY2760-125	125mm Male Plug
ABY2760-150	150mm Male Plug

BAUER COUPLINGS

BAUER THREADED FEMALES



PART NO.	DESCRIPTION
ABY2700-100	100mm Threaded Female
ABY2700-125	125mm Threaded Female
ABY2700-150	150mm Threaded Female

BAUER COUPLINGS

BAUER THREADED MALES



PART NO.	DESCRIPTION
ABY2780-100	100mm Threaded Male
ABY2780-125	125mm Threaded Male
ABY2780-150	150mm Threaded Male

BAUER COUPLINGS

BAUER 90 DEGREE MALE BENDS



PART NO.	DESCRIPTION
ABY2735-125	5" Male Bend
ABY2735-150	6" Male Bend



For prices see **Pages 25-26**
in **Q-PARTS Price List**

BAUER COUPLINGS

BAUER 90
DEGREE **FEMALE**
BENDS



PART NO.	DESCRIPTION
ABY2745-125	5" Female Bend
ABY2745-150	6" Female Bend

BAUER COUPLINGS

HANDLE FOR
BAUER **MALE**
COUPLINGS



PART NO.	DESCRIPTION
ABY2795-100H	4" Male Handle
ABY2795-125H	5" Male Handle
ABY2795-150H	6" Male Handle

BAUER COUPLINGS

BAUER O-RING
COUPLINGS



PART NO.	DESCRIPTION
ABY2720-76	76mm Rubber O-Ring
ABY2720-100	100mm Rubber O-Ring
ABY2720-125	125mm Rubber O-Ring
ABY2720-150	150mm Rubber O-Ring

BAUER COUPLINGS

FEMALE
WELD-ON END



PART NO.	DESCRIPTION
ABY2770-100	4" Female Weld-On End



ABBEY MANUFACTURED COUPLINGS

ABBEY MANUFACTURED COUPLINGS

ABBEY HEAVY
DUTY BENDS



PART NO.	DESCRIPTION
ABYBEND3	3" Weldable Bend
ABYBEND4L	4" Weldable Bend (Long Type)
ABYBEND4S	4" Weldable Bend (Short Type)
ABYBEND5	5" Weldable Bend
ABYBEND5S	5" Bend Complete with Flange & Male End
ABYBEND6	6" Weldable Bend
ABYBEND6L	6" Weldable Bend (Long Type)
ABYBEND6S	6" Weldable Bend (Short Type)
ABYBEND8L	8" Weldable Bend (Long Type)
ABYBEND8S	8" Weldable Bend (Short Type)

ABBEY MANUFACTURED COUPLINGS

ABBEY HEAVY
DUTY REDUCERS



PART NO.	DESCRIPTION
ABYRED5-4	5" - 4" Weldable Reducer
ABYRED6-4	6" - 4" Weldable Reducer
ABYRED6-5	6" - 5" Weldable Reducer



For prices see **Pages 26-27**
in **Q-PARTS Price List**

6"/8" ACTIVATOR RAMS, SPRINGS & COMPONENTS

ACTIVATOR RAMS, SPRINGS & COMPONENTS

6" ACTIVATOR RAM COMPLETE WITH SPRING



ACTIVATOR RAMS, SPRINGS & COMPONENTS

ACTIVATOR RAM COMPLETE WITH SPRING



PART NO.

DESCRIPTION

ABY2180/90	6" Activator Ram Complete with Spring <i>Suitable for Brand MZ and RIV Gate Valves</i>
ABY2180/90-8	8" Activator Ram Complete with Spring <i>Suitable for Brand MZ and RIV Gate Valves</i>
ABY2180-6	6" Hydraulic Cylinder Only
ABY2190-6	Spring For Activator Ram
ABY2192	Threaded Rod for 6" Activator Ram
ABYACT6/2	Stainless Steel Rod for ABY2180/90
ABY2193	Nut For 6" Activator Ram
ABY2185	Ram Seal Kit
ABY2186	Medium White Ram Seal Kit
ABY2187	Large White Ram Seal Kit
ABY2188	Square Seal Kit (Old Type)
ABY2188/NT12	Seal Kit
ABY2188N	Square Seal Kit (New Type)
ABY2188R	Square Seal Ring
ABY2191-8	8" Valve Assembly Seal Kit

PART NO.

DESCRIPTION

ABY2181/91	6" Activator Ram Complete with Spring to suit Hi-Spec Models
------------	--------------------------------------------------------------



For prices see **Page 27**
in **Q-PARTS Price List**

SLURRY TANK KITS

SLURRY TANK KITS

6" FILL POINT
COMPLETE



PART NO.

DESCRIPTION

RV7F2/6FP

6" Fill Point Complete with Double Flange Valve with Heavy Duty Perrot Quick Attachment

ABY9135

Manual Handle for Gate Valve

ART7F2-6CWH

6" Light Gate Valve Double Flange Complete with Handle

SLURRY TANK KITS

WASH DOWN
CONVERSION
KIT



PART NO.

DESCRIPTION

ABY2093

Wash Down Conversion Kit

SLURRY TANK KITS

WASH DOWN
HOSE KIT
COMPLETE



PART NO.

DESCRIPTION

HOS6090

26 Ft Wash Down Hose Kit Complete

HOS6091

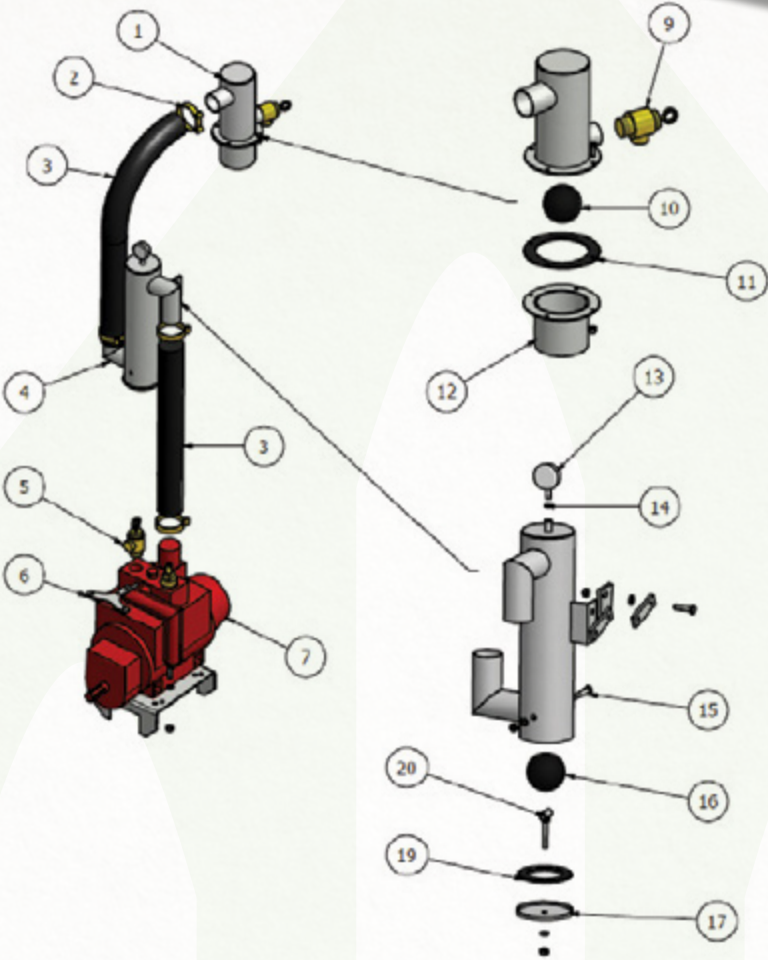
52 Ft Wash Down Hose Kit Complete



For prices see **Pages 27-28**
in **Q-PARTS Price List**

VACUUM TANK
REAR DOORS,
TRAPS &
COMPONENTS

 For prices see **Page 28**
in **Q-PARTS Price List**



VACUUM TANK
REAR DOORS,
TRAPS &
COMPONENTS

80MM/100MM
TOP TRAP
COMPLETE



PART NO.		DESCRIPTION
ABY9021		80mm Top Trap Complete
ABY9050		100mm Top Trap Complete
ABY9016-80		80mm Top Trap <i>Specifications: Top Half</i>
ABY9016-100		100mm Top Trap <i>Specifications: Top Half</i>
9	FIT290-1 1/2	Plug
	ART13-1 1/2	Valve
11	ABY2140-L	Seal

VACUUM TANK
REAR DOORS,
TRAPS &
COMPONENTS

80MM/100MM
FRONT TRAP
COMPLETE



PART NO.		DESCRIPTION
ABY9051		80mm Front Trap Complete
ABY9052		100mm Front Trap Complete
17	ABY9024-N/T	Cap for Trap
19	ABY2140-S-N/T	O-Ring for Front Trap Cap
20	ABY9024-DB	Front Trap Drop Bolt C/W Bush

VACUUM TANK REAR DOORS, TRAPS & COMPONENTS

MANOMETER GAUGE



PART NO.	DESCRIPTION
----------	-------------

ABY2130-60	60mm Manometer Gauge
------------	----------------------

VACUUM TANK REAR DOORS, TRAPS & COMPONENTS

TRAP BALLS



PART NO.	DESCRIPTION
----------	-------------

ABY2135-60	60mm Trap Ball
ABY2135-70	70mm Trap Ball
ABY2135-80	80mm Trap Ball
ABY2135-100	100mm Trap Ball

VACUUM TANK REAR DOORS, TRAPS & COMPONENTS

HOSE HANGERS



PART NO.	DESCRIPTION
----------	-------------

ABY9563	6" Hose Hanger
ABY9563-8	8" Hose Hanger



For prices see **Page 28**
in **Q-PARTS Price List**

1



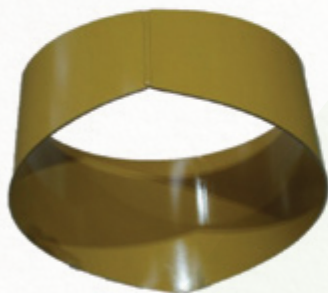
2



3



4



5



6



7



8



VACUUM TANK REAR DOORS, TRAPS & COMPONENTS

REAR DOORS & COMPONENTS



For prices see **Page 29**
in **Q-PARTS Price List**

	PART NO.	DESCRIPTION
1	ABY2200-O/F	20" Rear Door Complete with Flange Sleeve
	ABY2201-O/F	24" Rear Door Complete with Flange Sleeve
	ABY2202-O/F	30" Rear Door Complete with Flange Sleeve
2	ABY2170-1524	Rear Door Seal to suit 20" Door
	ABY2170L	Rear Door Seal Specifications: 25mm Diameter
	ABY9331-P	Pin for 24" Back Door
3	ABY2170-44X25MM	Door Seal for 24" & 30" Doors Specifications: Sold per 2m Length
4	ABY2200-B	Door Closing Weld-On Band
5	ABY2179	Threaded Hook
	ABY2179G-L	Galvanised Hook Only Specifications: Door Closing
6	ABY2177	Threaded Nut
	ABY2177G	Galvanised Door Closing Nut Only
7	ABY2178	Door Closing Receiver
8	ABY2175	Door Closing Complete
	ABY2176	Door Closing Screw Complete with Bracket


 For prices see **Page 29**
 in **Q-PARTS Price List**

FRONT LEVEL INDICATOR & INSPECTION GLASSES

Visual indicator to highlight where the slurry is in the tank. Ideal to indicate when tank is empty or full (when loading and unloading).

FRONT LEVEL INDICATOR & INSPECTION GLASSES

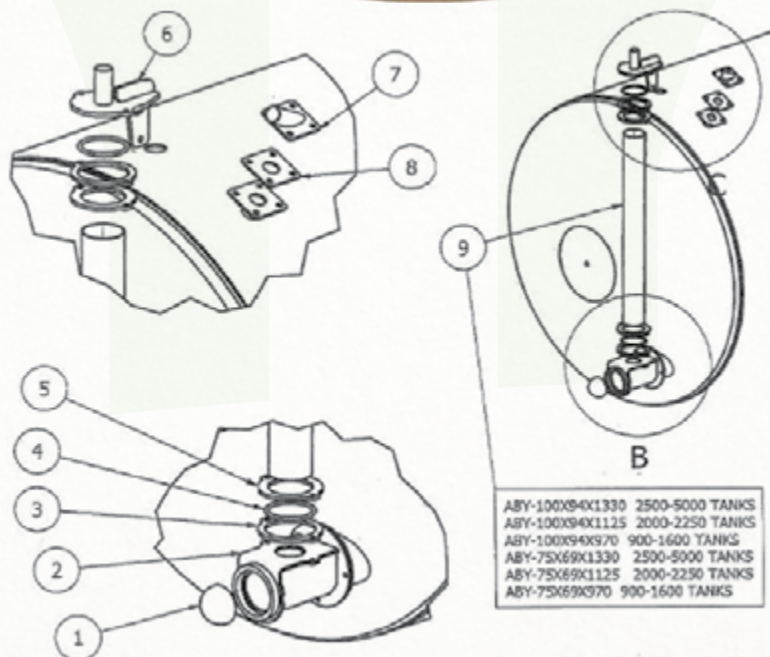
SIGHT GLASS

PART NO.	DESCRIPTION
ART41-4	4" Sight Glass
ART41-4-R	Ring for Sight Glass Complete with Thumb Screw
ABY2156-4	4" Steel Socket Ring for Front Level Indicator



FRONT LEVEL INDICATOR & INSPECTION GLASSES BREAKDOWN

FRONT LEVEL INDICATOR



PART NO.	DESCRIPTION
OE1397	Front Level Indicator Kit (75mm)
OE1398	Front Level Indicator Kit (100mm)
2 ABY-FLI01.022	Fli Base
3 ABY-FLI01.120	100mm Mid Ring
ABY0FLI01.140	75mm Mid Ring
4 ABY-OR-96X10	O-Ring
5 ABY-FLI01.119	100mm Top Ring
ABY-FLI01.141	75mm Top Ring

PART NO.	DESCRIPTION
6 ABY-FLI01.014	Fli Top Br.
7 ABY-FLI01.023	Tank Vent
8 ABY2140-L	Tank Vent Gasket
9 AS SHOWN	Fli Tube

FRONT LEVEL INDICATOR & INSPECTION GLASSES

INSPECTION
GLASS
COMPLETE



PART NO.	DESCRIPTION
ABY2150-2	2" Inspection Glass Complete
ABY2150-3	3" Inspection Glass Complete
ABY2156-2	2" Steel Ring for Inspection Glass
ABY2156-3	3" Steel Ring for Inspection Glass

FRONT LEVEL INDICATOR & INSPECTION GLASSES

INSPECTION
GLASS



PART NO.	DESCRIPTION
ABY2152-2	2" Inspection Glass
ABY2154-2	2" O-Ring for Inspection Glass
ABY2152-3	3" Inspection Glass
ABY2154-3	3" O-Ring for Inspection Glass



For prices see **Pages 29-30**
in **Q-PARTS Price List**

AUTOFILLER RUBBER COUPLING

PART NO.	DESCRIPTION
ABYBP1101/H	8" Autofiller Rubber Coupling
ABY-8652200Z	8" O-Ring for Hopper (ABY-MI832Z)



SIDE SPREADER CHAINS & HEADS

SIDE SPREADER CHAINS & HEADS

SIDE SPREADER CHAINS COMPLETE



PART NO.	DESCRIPTION
ABY3061	13 Link x 3/8" Chain Complete
ABY3063	15 Link x 3/8" Chain Complete
ABY3067	13 Link x 1/2" Chain Complete
ABY3069	15 Link x 1/2" Chain Complete
ABY3101	13 Link x 5/8" Chain Complete
ABY3101L	13 Link x 5/8" Chain Complete (2011+ Version)

SIDE SPREADER CHAINS & HEADS

SIDE SPREADER CHAIN ONLY



PART NO.	DESCRIPTION
ABY3062	15 Link x 3/8" Chain Only
ABY3066	13 Link x 1/2" Chain Only
ABY3068	15 Link x 1/2" Chain Only
ABY3099	13 Link x 5/8" Chain Only

SIDE SPREADER CHAINS & HEADS

SIDE SPREADER CHAIN HEAD



PART NO.	DESCRIPTION
ABY3064	Standard Chain Head
ABY3070	Heavy Duty Chain Head

SIDE SPREADER CHAINS & HEADS

SPIRAL PIN



PART NO.	DESCRIPTION
ABY3072S	Spiral Pin to suit Chain Head
ABY3080	5/8" Heavy Duty Chain Head

SIDE SPREADER CHAINS & HEADS

SIDE SPREADER HEAD



PART NO.	DESCRIPTION
----------	-------------

ABY3093	Fraser Side Spreader Head
---------	---------------------------

SIDE SPREADER CHAINS & HEADS

CHAIN PLATE

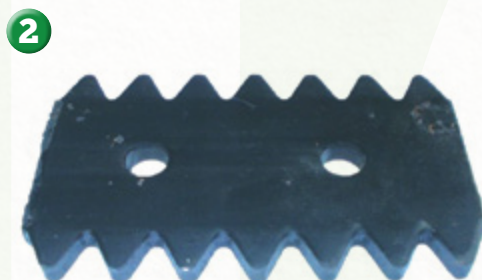


PART NO.	DESCRIPTION
----------	-------------

ABY3084	Standard Chain Plate Specifications: 4" x 2 1/2" x 8mm
ABY3085	Standard Chain Plate Specifications: 4" x 3" x 8mm
ABY3086	Standard Chain Plate Specifications: 4" x 4" x 8mm
ABY3071	Heavy Duty Chain Plate Specifications: 75mm x 90mm x 10mm

SIDE SPREADER CHAINS & HEADS

CUTTER PUMP BEARINGS & AP SPREADER TIPS



Q For prices see **Pages 30-31** in **Q-PARTS Price List**



3



PART NO.	DESCRIPTION
----------	-------------

1	ABY3631 Cutter Pump Rubber Bearing
2	ABY6907 Spreader Tips Specifications: AP700/AP900/AP1100
3	ABY6903 AP Feeding Out Spring Specifications: Right Hand
	ABY6903L AP Feeding Out Spring Specifications: Left Hand
4	ABY3632 Cutter Pump Cylindrical Rubber Bearing

ABBEY SIDE SPREADER PARTS

ABBEY SIDE SPREADER PARTS

4-HOLE
FLANGE
BEARING



PART NO.	DESCRIPTION
----------	-------------

BRNUCFX08E-24	1 1/2" 4-Hole Flange Bearing <i>Specifications: Rear Bearing to suit 2060/70/90</i>
BRNUCF211E-32	2" 4-Hole Flange Bearing <i>Specifications: Front Bearing to suit 2060/70/90</i>
BRNUCFX07E-22	1 3/8" 4-Hole Flange Bearing <i>Specifications: Rear Bearing to suit 2025/40</i>
BRNUCF209E-28	1 3/4" 4-Hole Flange Bearing <i>Specifications: Front Bearing to suit 2025/40</i>
BRNUCFX14E-H	70mm Heavy Duty 4-Hole Flange Bearing <i>Specifications: To suit 2150/2250</i>

BEARING

1



PART NO.	DESCRIPTION
----------	-------------

ABY3039	Bearing <i>Specifications: RMS 11</i>
----------------	------------------------------------------

SPLINED
STUB SHAFT

2



PART NO.	DESCRIPTION
----------	-------------

ABY3023	2" Splined Stub Shaft
ABY3024	1 3/4" Splined Stub Shaft

3



PART NO.	DESCRIPTION
----------	-------------

ABY3025	1 1/2" Splined Stub Shaft
----------------	---------------------------



For prices see **Page 31**
in **Q-PARTS Price List**

ABBEEY SIDE SPREADER PARTS

ABBEEY SIDE SPREADER DRIVE CHAIN SPROCKET



PART NO.	DESCRIPTION
ABY3000	Sprocket Specifications: 33 Tooth x 1 1/4"
ABY3002	Sprocket Specifications: 27 Tooth x 1"
ABY3004	Sprocket Specifications: 16 Tooth x 1" (BS Pitch)
ABY3005	Sprocket Specifications: 14 Tooth x 1 1/4" (All Side Spreaders up to 2090)
ABY3005H	Sprocket Specifications: 14 Tooth x 1 1/4" (Heavy Duty Hardened to suit 2090)
ABY3007	Sprocket Specifications: 14 Tooth x 1"
ABY3008	Plate Wheel Specifications: 12 Tooth x 1 1/4"

ABBEEY SIDE SPREADER PARTS

ABBEEY SIDE SPREADER 1 3/8" SPLINED DRIVE SHAFT



	PART NO.	DESCRIPTION
1	ABY3035	1 3/8" Splined Drive Shaft Specifications: Up to 2090
	ABY3035H	Splined Drive Shaft Specifications: Heavy Duty Hardened to suit 2090
2	ABY3037	Nut Specifications: To suit 1 3/8" Splined Shaft

ABBEEY SIDE SPREADER PARTS

ABBEEY SIDE SPREADER STARTER FLAIL



PART NO.	DESCRIPTION
ABY3021	Starter Flail Specifications: To suit 2025/2040
ABY3020	Starter Flail Specifications: To suit 2060/2070/2090
ABY3022	Bushing Specifications: To suit ABY3020/1



HERTELL WATER & EFFLUENT PUMP

Centrifugal Pump for lifting and pumping sewage water and liquid slurries. Max Flow rate 1,000L./Min. Suction Height 5m/16ft.RPM: 540. Hose 60mm (pump and hose have to be primed).



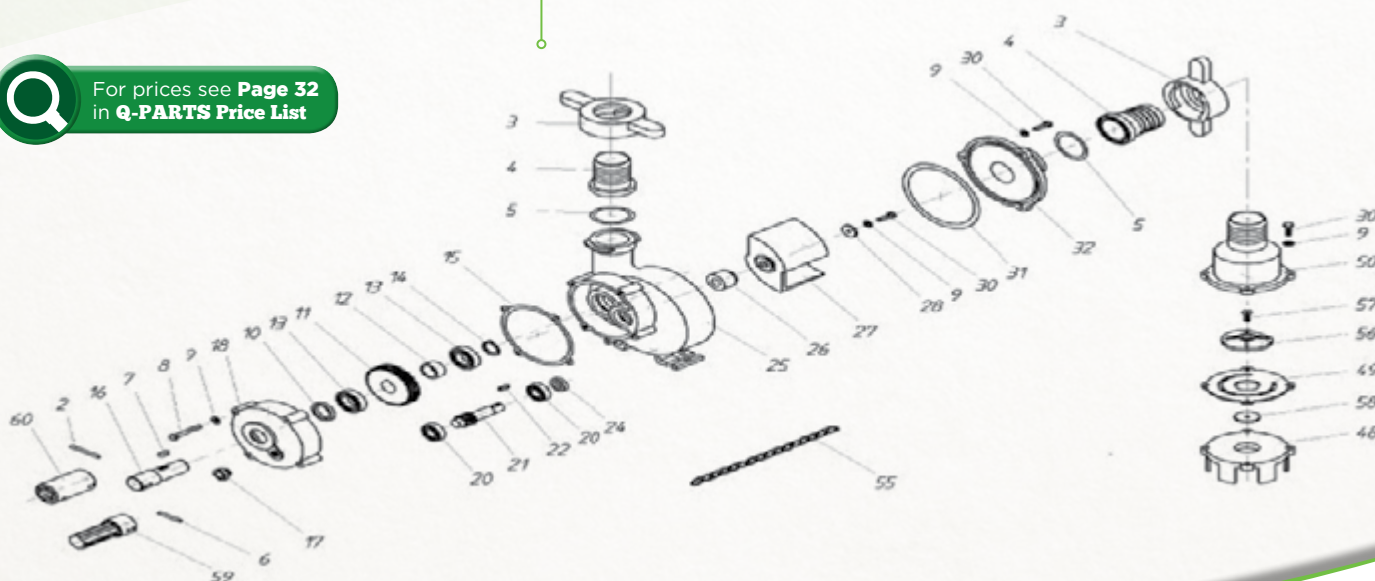
HERTELL WATER & EFFLUENT PUMP BREAKDOWN

HER1000

PART NO.	DESCRIPTION
2	HER1000-560 Pump Pin <i>Specifications: 6mm x 45mm</i>
3	HER1000-108 Pump Hose Flange
4	HER1000-110 Pump Hose Compling
5	HER1000-111 Pump O-Ring
10	HER1000-116 Pump Seal <i>Specifications: 35mm x 45mm x 7mm</i>
11	HER1000-118 Pump Gear
15	HER1000-123 Pump Gasket
16	HER1000-125 Pump Axle
18	HER1000-128 Pump Gearbox Cover
21	HER1000-131 Pump Gear Shaft
26	HER1000-136 Pump Mechanical Seal
27	HER1000-138 Pump Impellor
32	HER1000-143 Pump Cover
49	HER1000-146 Pump Plug Rubber Gasket
51	HER1000-149 Pump Footvalve <i>Specifications: Complete</i>
60	HER1000-160 Female Spline Connection



For prices see **Page 32**
in **Q-PARTS Price List**

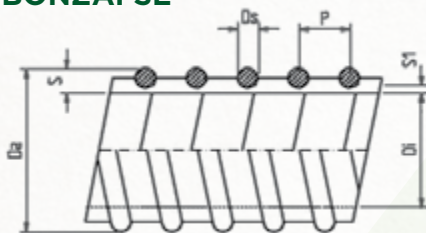


SUCTION HOSES

HEAVY DUTY SPIRAL SUCTION HOSE

Strong and flexible suction and delivery hose with a smooth inside wall and an external spiral wall, which reduces hose wear and increases working life. Very good resistance to atmospheric conditions and chemicals. Specially suitable for industry and agriculture applications for the passage of waste water, manure, etc.

BONZAI SE



For prices see **Pages 32-33**
in **Q-PARTS Price List**

I. Diam ±4%	E. Diam ±4%	Weight ±4%	Min. Bending Radius	Max Working Pressure	Vacuum
mm	mm	g/m	n x Od	bar	m H ₂ O
25	34	500	3 x	7	9
30	40	570	3 x	6	9
32	41	600	3 x	6	9
35	44	660	3 x	6	9
38	48	700	3 x	6	9
40	50	740	3 x	6	9
45	55,5	900	3 x	5,5	9
50	60,8	1050	3 x	5	9
51	61,8	1070	3 x	5	9
60	71,6	1300	3.5 x	4,5	9
63	75	1400	3.5 x	4,5	9
65	77,4	1500	3.5 x	4,5	9
70	83	1650	3.5 x	4	9
75	88	1700	3.5 x	4	9
76	89	1720	3.5 x	4	9
80	93	1900	3.5 x	4	9
90	104	2250	3.5 x	3,5	9
100	116	2630	3.5 x	3	9
102	118	2700	3.5 x	3	9
110	126	3100	4 x	3	9
120	136	3350	4 x	2,5	9
125	142	3820	4 x	2,5	9
127	144	3900	4 x	2,5	9
152	170	5000	4 x	2	9
203	226	10000	4 x	1,5	9

CLIP SIZE TO SUIT SUCTION HOSE

30mm >> 36-39	76mm >> 86-91
40mm >> 48-51	80mm >> 86-91
50mm >> 56-59	100mm >> 113-121
60mm >> 68-73	125mm >> 140-148
63mm >> 74-79	150mm >> 162-174
70mm >> 80-85	200mm >> 214-226

PART NO. DESCRIPTION CLIP SIZE

15/20FT LENGTHS OF SUCTION HOSE

HOS6020-S	15ft. x 5" Spiral Suction Hose	
HOS6021-S	20ft. x 5" Spiral Suction Hose	
HOS6022-S	15ft. x 6" Spiral Suction Hose	
HOS6023-S	20ft. x 6" Spiral Suction Hose	
HOS6024-S	20ft. x 8" Spiral Suction Hose	
HOS6028-S	15ft. x 6" Spiral Suction Hose C/W Q/A Ftg.	
HOS6029-S	20ft. x 6" Spiral Suction Hose C/W Q/A Ftg.	
HOS6031-S	20ft. x 6" Spiral Hose C/W Major Male Q/A	

ROLLS OF SUCTION HOSE

HOS6001-30	30mm Suction Hose Spiral	50m
HOS6001-40	40mm Suction Hose Spiral	50m
HOS6001-50	50mm Suction Hose Spiral	50m
HOS6001-60	60mm Suction Hose Spiral	50m
HOS6001-63	63mm Suction Hose Spiral	50m
HOS6001-70	70mm Suction Hose Spiral	50m
HOS6001-76	76mm Suction Hose Spiral	50m
HOS6001-80	80mm Suction Hose Spiral	50m
HOS6001-100	100mm Suction Hose Spiral	30m
HOS6001-125	125mm Suction Hose Spiral	30m
HOS6001-150	150mm Suction Hose Spiral	20m
HOS6001-200	200mm Suction Hose Spiral	6m

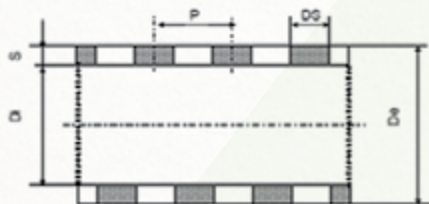
STANDARD SUCTION HOSE

Extremely flexible and transparent hose made of good quality material, according to the most recent European norms and reinforced with a steel wire spiral. It has also an excellent resistance to pressure, full vacuum and accidental crushing. The special spiral guarantees an exceptional resistance to vacuum even in the most difficult conditions.

Suction and delivery hose for many industries and civil works, for liquids, water, delivery of pellets, etc. Resistant to many chemicals, sea water, as well as to bending. Specially suitable for applications in cool conditions, also when maximum flexibility is required.

Hose in flexible PVC with a rectangular shock resistant rigid PVC spiral, which gives a superior crush resistance.

EIREFLEX



I. Diam ±4%	E. Diam ±4%	Weight ±4%	Min. Bending Radius	Max Working Pressure	Vacuum
mm	mm	g/m	n x Od	bar	m H2O
30	38	530	3x	8	9
32	40,5	550	3x	8	9
35	43,5	600	3x	8	9
38	46,4	650	3x	7,5	9
40	48,5	680	3x	7,5	9
45	52,5	750	3x	7	9
50	58,4	850	3x	6,5	9
51	59,4	850	3x	6,5	9
60	68,8	1000	3x	6	9
63	72	1150	3x	6	9
65	73,8	1180	3x	6	9
70	80,2	1300	3x	5,5	9
75	85,2	1500	3,5x	5,5	9
76	86,2	1500	3,5x	5,5	9
80	90,4	1700	3,5x	5	9
90	106	1900	3,5	5	9
102	117	2200	3,5x	4,5	9
110	121	2400	3,5x	4	9
120	131,2	2800	3,5x	4	9
127	140,1	3200	4x	3,5	9
152	166,2	4300	4x	3	9
160	173,6	4600	4x	3	9
203	224,4	8000	4x	2,5	9



PART NO. DESCRIPTION CLIP SIZE

15/20FT LENGTHS OF SUCTION HOSE

HOS6021-B	20ft. x 5" Suction Hose	
HOS6022-B	15ft. x 6" Suction Hose	
HOS6028-B	15ft. x 6" Suction Hose Complete with Q/A Ftg.	
HOS6029-B	20ft. x 6" Suction Hose Complete with Q/A Ftg.	

ROLLS OF SUCTION HOSE

HOS6001-50B	50mm Suction Hose	50m
HOS6001-76B	76mm Suction Hose	50m
HOS6001-100B	100mm Suction Hose	50m

Flexible Layflat PVC hose with polyester yarn reinforcement, resistant to elongation, for pressurised delivery of liquids.

O.D.	O.D.	O.D.	TOTAL THICKNESS	WEIGHT	WORKING PRESSURE 13.23°C	WORKING PRESSURE 40 °C	WORKING PRESSURE 60 °C	BUSTING PRESSURE 23°C	TENSILE STRENGTH	TENSILE BREAKING LOAD	COIL LENGTH
inch	mm	mm	mm	g/m	bar	bar	bar	bar	kg	kg	m
1	20	24	2	150	10	7	4	30	110	255	50/100
	25	29	2	190	10	7	4	30	120	285	50/100
	30	34	2	220	10	7	4	30	165	385	50/100
1 1/4	32	36	2	240	10	7	4	30	165	385	50/100
	35	39	2	290	10	7	4	30	180	415	50/100
1 1/2	38	42	2	300	10	7	4	30	190	445	50/100
	40	44	2	320	10	7	4	30	205	480	50/100
1 3/4	45	49	2	360	10	7	4	30	235	545	50/100
	51	55	2	410	10	7	4	30	250	575	50/100
2	60	65	2.5	550	8	5	3	24	450	1055	50/100
	63	68.5	2.5	570	8	5	3	24	480	1115	50/100
	70	75	2.5	650	8	5	3	24	535	1245	50/100
3	76	81	2.5	700	8	5	3	24	600	1390	50/100
	80	85	2.5	750	8	5	3	24	620	1440	50/100
3 1/2	90	95	2.5	860	8	5	3	24	700	1630	50/100
	102	108	3	1000	8	5	3	24	785	1825	50/100
4	110	116	3	1150	8	5	3	24	865	2015	50/100
	127	133	3	1350	6	4	2	18	970	2255	50/100
6	152	158	3	1600	4	3	1	12	1080	2520	50/100
8	204	210	3	2400	3	2	1	9	1495	3480	50
All technical specifications apply to a temperature of 23°C ± 2°C (ISO 291). - Tolerance on all specifications ± 5%.											



PART NO.	DESCRIPTION	ROLL LENGTH
----------	-------------	-------------

HOS6089-50	50mm Layflat Hose	50m
HOS6089-63	63mm Layflat Hose	50m
HOS6089-70	70mm Layflat Hose	50m
HOS6089-76	76mm Layflat Hose	50m
HOS6089-80	80mm Layflat Hose	50m
HOS6089-100	100mm Layflat Hose	50m
HOS6089-125	125mm Layflat Hose	50m
HOS6089-150	150mm Layflat Hose	50m



For prices see **Page 33**
in **Q-PARTS Price List**

LAYFLAT BLUE SUCTION HOSE

Flexible Layflat PVC hose with polyester yarn reinforcement, resistant to elongation, for pressurised delivery of liquids.



Ø I.D.	Ø I.D.	Ø O.D.	TOTAL THICKNESS	WEIGHT	WORKING PRESSURE 13 23°C	WORKING PRESSURE 40 °C	WORKING PRESSURE 60 °C	BURSTING PRESSURE 23 °C	TENSILE STRENGTH	TENSILE BREAKING LOAD	COIL LENGTH
inch	mm	mm	mm	g/m	bar	bar	bar	bar	kg	kg	m
	20	23	1.5	135	8.5	7	4	25.5	85	230	50/100
1	25	28	1.5	155	8.5	7	4	25.5	96	260	50/100
	30	33	1.5	200	8.5	7	4	25.5	-	-	50/100
1 1/4	32	35	1.5	210	8.5	7	4	25.5	127	345	50/100
	35	38	1.5	220	8.5	7	4	25.5	138	375	50/100
1 1/2	38	41	1.5	240	8.5	7	4	25.5	160	430	50/100
	40	43	1.5	250	8.5	7	4	25.5	160	435	50/100
1 3/4	45	48	1.5	280	6.5	5	2.5	19.5	180	490	50/100
2	51	54	1.5	320	6.5	5	2.5	19.5	190	515	50/100
	55	58	1.5	340	6.5	5	2.5	19.5	-	-	50/100
	60	64	2	360	6.5	5	2.5	19.5	350	950	50/100
2 1/2	63	67.5	2	420	6.5	5	2.5	19.5	370	1000	50/100
	70	74	2	450	5.5	4	2	16.5	415	1120	50/100
3	76	80	2	520	5.5	4	2	16.5	460	1250	50/100
	80	84	2	580	5.5	4	2	16.5	480	1300	50/100
3 1/2	90	94	2	660	5.5	4	2	16.5	540	1470	50/100
4	102	106	2	720	5.5	4	2	16.5	605	1640	50/100
	110	115	2.5	780	5.5	4	2	16.5	1130	1800	50/100
5	127	132	2.5	1130	3	2	0.5	9	800	2150	50/100
6	152	157	2.5	1350	3	2	0.5	9	815	2200	50/100
8	204	209	2.5	2000	2.5	1.5	0.3	7	780	2100	50

All technical specifications apply to a temperature of 23°C ± 2°C (ISO 291). - Tolerance on all specifications ± 5%

PART NO.	DESCRIPTION	ROLL LENGTH
HOS6089-50B	50mm Blue Layflat Hose	50m
HOS6089-100B	100mm Blue Layflat Hose	50m
HOS6089-125B	125mm Blue Layflat Hose	50m



For prices see **Page 34**
in **Q-PARTS Price List**

REINFORCED HOSES

Resistant to all atmospheric conditions. Good resistance to chemicals. Specially suitable for agricultural and industrial applications. Suction and delivery hose for industrial and agricultural waters, fertilizers and pesticides.

REINFORCED HOSE

WIRE REINFORCED TRAP HOSE

CLIP SIZE TO SUIT TRAP HOSE

60mm	>>	68-73
80mm	>>	86-91
100mm	>>	104-112



PART NO.

DESCRIPTION

SIZE

WIRE REINFORCED TRAP HOSE

HOS6031-60	60mm Wire Reinforced Trap Hose	20m
HOS6031-80	80mm Wire Reinforced Trap Hose	20m
HOS6031-100	100mm Wire Reinforced Trap Hose	20m

TRAP HOSE CUT IN LENGTH TO SUIT ABBEY TANKER

HOS6031-80-0865	80mm Trap Hose 865	
HOS6031-80-1016	80mm Trap Hose 1016	
HOS6031-80-1143	80mm Trap Hose 1143	
HOS6031-80-1200	80mm Trap Hose 1200	
HOS6031-80-1245	80mm Trap Hose 1245	
HOS6031-80-1270	80mm Trap Hose 1270	
HOS6031-80-1295	80mm Trap Hose 1295	
HOS6031-80-1425	80mm Trap Hose 1425	
HOS6031-80-1600	80mm Trap Hose 1600	
HOS6031-80-1730	80mm Trap Hose 1730	
HOS6031-100-0410	100mm Trap Hose 410	

REINFORCED HOSE

CLEAR REINFORCED HOSE

CLIP SIZE TO SUIT CLEAR REINFORCED HOSE

51mm	>>	60-63
80mm	>>	92-97
100mm	>>	104-112

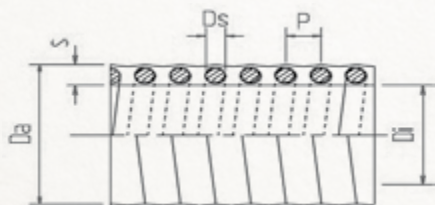


PART NO.

DESCRIPTION

HOS6051B-50	50mm Clear Reinforced Hose
HOS6051-51	51mm Clear Reinforced Hose
HOS6051-80	80mm Clear Reinforced Hose
HOS6051-100	100mm Clear Reinforced Hose

NOVIGREEN HEAVY SE



PART NO.

DESCRIPTION

HOS6002-40	40mm Hose
HOS6002-50	50mm Hose



For prices see **Page 34**
in **Q-PARTS Price List**

BRAIDED HOSE

Good quality PVC Hose for delivery and suction, suitable for medium duty tasks. Excellent resistance to atmospheric conditions and chemicals.



PART NO.	DESCRIPTION	ROLL LENGTH
HOS6099-6	6mm Braided Hose	100m
HOS6099-8	8mm Braided Hose	100m
HOS6099-10	10mm Braided Hose	100m
HOS6099-13	13mm Braided Hose	100m
HOS6099-16	16mm Braided Hose	50m
HOS6099-19	19mm Braided Hose	50m
HOS6099-25	25mm Braided Hose	50m
HOS6099-32	32mm Braided Hose	50m
HOS6099-38	38mm Braided Hose	50m
HOS6099-40	40mm Braided Hose	50m

WASH HOSE KIT COMPLETE



PART NO.	DESCRIPTION
PVC LAYFLAT WASH HOSE COMPLETE	
HOS6090	10m Wash Hose Complete
HOS6091	15m Wash Hose Complete
HOS6090B	10m Economy Wash Hose Complete
HOS6091B	15m Economy Wash Hose Complete
RUBBER WASH HOSE COMPLETE	
HOS6038-51	8m Rubber Wash Hose Complete



For prices see **Pages 34-35**
in **Q-PARTS Price List**

MIKALOR HOSE CLIPS



For prices see **Pages 35-36**
in **Q-PARTS Price List**

MIKALOR HOSE CLIPS

MIKALOR STANDARD HOSE CLIPS



PART NO.	DESCRIPTION	BOX QUANTITY
CLP8-16	Hose Clip	50
CLP16-27	Hose Clip	50
CLP20-32	Hose Clip	50
CLP25-40	Hose Clip	50
CLP32-50	Hose Clip	50
CLP40-60	Hose Clip	50
CLP50-70	Hose Clip	50
CLP60-80	Hose Clip	50
CLP70-90	Hose Clip	50

MIKALOR HOSE CLIPS

MIKALOR HEAVY DUTY HOSE CLIPS



PART NO.	DESCRIPTION	BOX QUANTITY
CLP44-47	Heavy Duty Hose Clip	50
CLP47-51	Heavy Duty Hose Clip	50
CLP52-55	Heavy Duty Hose Clip	25
CLP56-59	Heavy Duty Hose Clip	25
CLP60-63	Heavy Duty Hose Clip	25
CLP63-68	Heavy Duty Hose Clip	25
CLP68-73	Heavy Duty Hose Clip	25
CLP73-79	Heavy Duty Hose Clip	25
CLP79-85	Heavy Duty Hose Clip	25
CLP85-91	Heavy Duty Hose Clip	25
CLP91-97	Heavy Duty Hose Clip	25
CLP97-104	Heavy Duty Hose Clip	25
CLP104-112	Heavy Duty Hose Clip	25
CLP113-121	Heavy Duty Hose Clip	25
CLP121-130	Heavy Duty Hose Clip	25
CLP130-139	Heavy Duty Hose Clip	10
CLP140-148	Heavy Duty Hose Clip	10
CLP149-161	Heavy Duty Hose Clip	10
CLP174-187	Heavy Duty Hose Clip	10
CLP187-200	Heavy Duty Hose Clip	10
CLP201-213	Heavy Duty Hose Clip	10
CLP214-226	Heavy Duty Hose Clip	10
CLP227-239	Heavy Duty Hose Clip	10
CLP239-252	Heavy Duty Hose Clip	10

PART NO.	DESCRIPTION	BOX QUANTITY
CLP17-19	Heavy Duty Hose Clip	50
CLP20-22	Heavy Duty Hose Clip	50
CLP23-25	Heavy Duty Hose Clip	50
CLP26-28	Heavy Duty Hose Clip	50
CLP29-31	Heavy Duty Hose Clip	50
CLP32-35	Heavy Duty Hose Clip	50
CLP36-39	Heavy Duty Hose Clip	50
CLP40-43	Heavy Duty Hose Clip	50